

A Guide to

# Farm Fresh Food

in Northeastern Connecticut

2025 Edition

**GROWN**   
**CON**nectED

YOUR COMMUNITY OF FARMS  
IN NORTHEAST CONN.



## Get ConNECTed. Find Your Local Farm.

Grown ConNECTed hopes to make local, farm-fresh food easier to find for YOU, the residents of the “Quiet Corner” of Northeastern CT (NECT). Our region has a vibrant farming community, yet small farms sometimes need a boost reaching residents to promote all of the delicious products they grow. That’s where we step in!

Farms are a vital part of our community, and by supporting them we can grow and thrive through our connections to each other. Whenever we shop at any of the more than **150 farms and farmstands** or one of the **18 farmers markets** to chat with farmers while picking up ingredients for meals at home, we not only feed ourselves but our community’s resiliency.

Use this guide to find a local farm you love. Our farmers hope to see you soon!



Launched in 2021, UConn Extension leads the Grown ConNECTed marketing initiative, collaborating with regional organizations to guide the project.

Learn more at: [grownconnected.org](https://grownconnected.org)





# UConn Extension

**Local questions need local answers.**

UConn Extension connects you with experts who understand Connecticut's soils, seasons, and communities.

Whether it's gardening, farming, or food safety—we're here with research-based advice.

Ask a question or explore answers at [s.uconn.edu/AskExtension](https://s.uconn.edu/AskExtension).

## Answers You Can Trust.

# UConn | EXTENSION

For more information, visit us at: [s.uconn.edu/extension](https://s.uconn.edu/extension)

The University of Connecticut complies with all applicable federal and state laws regarding non-discrimination, equal opportunity and affirmative action, including the provision of reasonable accommodations for persons with disabilities. Extension program participants with disabilities may request reasonable accommodations to address limitations resulting from a disability. For more information, please contact the UConn Extension Civil Rights Liaison at [extensioncivilrights@uconn.edu](mailto:extensioncivilrights@uconn.edu).

Funding for A Guide to Farm Fresh Food in Northeastern Connecticut was made possible by the U.S. Department of Agriculture's (USDA) Agricultural Marketing Service through grant award number 24FMPPCT1225-00. Its contents are solely the responsibility of the authors and do not necessarily represent the official views of the USDA.

**Thank you to our project partners at the Connecticut Department of Agriculture, CLiCK Willimantic, and the Connecticut Department of Social Services.**

**Cover photo by Grant's Berry Patch, Lisbon  
Design by The Bananaland, Melissa Gabso, and Ginger Jenne**

**All farms listed in this guide were confirmed to be in operation as of Spring 2025. If any farming operation was omitted, or if there are discrepancies in the listings, we encourage individuals to contact [ginger.jenne@uconn.edu](mailto:ginger.jenne@uconn.edu) so we can provide accurate information on our website and in future editions of the guide.**

# ANDOVER

## Hurst Farm

Tom and Shari Hurst  
746 East Street  
Andover, CT 06232

860-646-6536

facebook: Hurst Farm

Hurstfarm@sbcglobal.net

Offering: vegetables, fruit, eggs, value added products, honey, maple syrup, CSA

Open Hours: Tue-Fri 9am-5:30pm, Sat 9am-4pm

Find us at: our farm

Accepting: credit/debit, cash, check



## The Landing Strip Farm

Allison Goff  
9 Route 6  
Andover, CT 06232

860-373-4702

facebook: The Landing Strip Farm

TheLandingStripFarm@yahoo.com

Offering: vegetables, fruit, eggs, beef, pork, poultry, delivery, CSA

Open Hours: Tue-Sat 8am-8pm, Sun 12-3pm

Find us at: our farmstand and through our CSA, call ahead to reserve meats for the year

Accepting: cash, check, paypal



## Proctor-Hall Farm

Scott Warren  
225 Bunker Hill Road  
Andover, CT 06232

719-213-8465

proctorhallfarm.com

proctorhallfarm@gmail.com

Offering: pasture raised Tamworth-Berkshire pigs fed non-gmo grain, pasture raised chicken and eggs; pick up by appt

Find us at: Coventry farmers market, Willimantic Food Coop

Accepting: credit/debit, cash, check, paypal



# ASHFORD

## BOTL Farm

Nick Weinstock  
859 Westford Road  
Ashford, CT 06278

908-268-3192

BOTLFarm.com

nick@BOTLFarm.com

Offering: animal welfare approved pork & eggs, certified grass fed lamb & goat, honey, wool, lumber, value added products

Open Hours: on farm store Tue noon-2pm, Sat 1-3pm. Self serve online orders daily 8:30am-8pm

Find us at: our farm stand, online store, Sturbridge, Assawaga, and Wooster Square farmers markets

Accepting: credit/debit, cash, check, paypal, venmo



## Farm Product Key



Vegetables



Poultry



Herbs



Community Supported Agriculture



Farm to School



Fruit



Eggs



Flowers



Pick Your Own



Accepts SNAP



Meat



Dairy



Value Added Products



USDA Certified Organic





Crookes Orchard, Ashford

## Circle G Farm

Gary and Morgan Gerstenlauer  
130 Kidder Brook Road  
Ashford, CT 06278

860-796-7262  
facebook.com/circlefarmct  
circlefarmct@yahoo.com

Offering: USDA processed pork and beef  
Find us at: our farm, by appointment only  
Accepting: cash



## Coruscant Farm

Ginger and Doug Jenne  
14 Cushman Rd  
Ashford, CT 06278

860-324-0867  
coruscantfarm.com  
instagram.com/coruscantfarm  
coruscantfarm@gmail.com

Offering: pastured beef and chicken, pasture raised eggs,  
vegetables, fruit, loofah, vegetable seedlings  
Open Hours: farmstand open daily or pickups by appointment  
Find us at: Willimantic Co-Op and our farmstand  
Accepting: cash, check, venmo



## Crookes Orchard

The Lacy Family  
317 Bebbington Road  
Ashford, CT 06278  
crookesorchard.com  
info@crookesorchard.com

Offering: pick your own blueberries, peaches and apples. Cider  
and baked goods. PYO flowers.  
Open Hours: opening in August. Check website for opening date  
for the season and updated hours.  
Find us at: farm store at the orchard  
Accepting: credit/debit, cash



## Dayspring Farm

Joe Murphy  
174 Waterfall Road  
Ashford, CT 06278

203-644-0885  
dayspringfarmct.com  
dayspringfarmct@gmail.com

Offering: grass fed beef, non-gmo eggs, delivery within 20 miles  
of Ashford for orders of \$300 or more  
Open Hours: farmstand eggs only Wed and Fri-Sun  
Find us at: order grass fed beef on our website  
Accepting: cash



## Knowlton Farm

James Knowlton  
95 Knowlton Hill Road  
Ashford, CT 06278

860 487-4163  
facebook.com/knowltonfarmct  
knowlton.farm.ct@gmail.com

Offering: beef, milk, and hay  
Open Hours: 10am - 7pm; Seven days a week  
Find us at: our farmstand  
Accepting: cash, venmo



## River's Edge Sugar House

The Proulx family  
326 Mansfield Road  
Ashford, CT 06278

860-429-1510  
riversedgesugarhouse.com  
Mapleone@sbcglobal.net

Offering: eggs, maple syrup products, honey  
Open Hours: by chance or appointment, see website for more  
information  
Find us at: our sugarhouse on Mansfield Road  
Accepting: credit/debit, cash, check



## Farm Product Key



Vegetables



Poultry



Herbs



Flowers



Community  
Supported  
Agriculture

Pick Your Own



USDA Certified  
Organic



Farm to  
School



Accepts  
SNAP



Fruit



Eggs



Value Added  
Products



Meat



Dairy



## Scarletoak Farm

Greg and Tammy Goodwin  
20 Snow Lane  
Ashford CT, 06278

860-942-9751  
[scarletoak9966@yahoo.com](mailto:scarletoak9966@yahoo.com)

*Offering:* beef, grass fed, grass finished, rotationally grazed, no vaccines, no pesticides or herbicides on fields  
*Open Hours:* call our farm  
*Accepting:* cash, check



## West View Farm

Chris & Rebecca Ferguson  
813 Westford Road  
Ashford, CT 06278

860-906-4880  
[westviewfarm.org](http://westviewfarm.org)  
[facebook.com/westviewfarm813](https://facebook.com/westviewfarm813)  
[westviewfarm813@gmail.com](mailto:westviewfarm813@gmail.com)

*Offering:* beef and pork  
*Open Hours:* order products online for farm pick up  
*Find us at:* our farm  
*Accepting:* credit/debit, cash, check



# BROOKLYN

## Creamery Brook Bison

Austin & Debbi Tanner  
19 Purvis Road  
Brooklyn, CT 06234

860-779-0837  
[creamerybrookbison.net](http://creamerybrookbison.net)  
[instagram.com/creamerybrookbison\\_ct](https://instagram.com/creamerybrookbison_ct)  
[creamerybrookbison@gmail.com](mailto:creamerybrookbison@gmail.com)

*Offering:* bison, pork, chicken  
*Open Hours:* Thurs & Fri 2pm- 6pm, Sat 9am-1pm, or by chance or appointment by calling or email for order pickup  
*Find us at:* our farm store and food truck  
*Accepting:* credit/debit, cash



## Crossmans' Country Farm

Keith Crossman, Kera Crossman, Joe Daignault  
340 Christian Hill Road  
Brooklyn, CT 06234

860-420-8407  
[facebook.com/crossmanscountryfarm](https://facebook.com/crossmanscountryfarm)  
[crossmanscountryfarm@gmail.com](mailto:crossmanscountryfarm@gmail.com)

*Offering:* vegetables, value added products, goat milk soap, local delivery  
*Open Hours:* 10am to sunset  
*Find us at:* our farm stand  
*Accepting:* credit/debit, cash, check

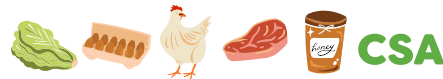


## Daigle Farm

Dillon Daigle  
257 Woodward Road  
Brooklyn, CT, 06234

860-961-1640  
[simplygrowingfood.com](http://simplygrowingfood.com)  
[instagram.com/daiglefarm](https://instagram.com/daiglefarm)  
[dillondaiglefarm@gmail.com](mailto:dillondaiglefarm@gmail.com)

*Offering:* vegetables, eggs, pastured chicken shares, pork shares, turkey, baked goods and specialty farm products, accepting orders of our products for weekly deliveries all over eastern CT  
*Open Hours:* Weekends 10am-4pm May through December  
*Find us at:* our farmstand and weekly ordering  
*Accepting:* credit/debit, cash, check, venmo



## Granpa K Farm

Brooklyn, CT

860-774-1260  
*facebook:* Granpa K Farm  
[granpakfarm@outlook.com](mailto:granpakfarm@outlook.com)

*Offering:* beef, pork, lamb, poultry, eggs, organically raised  
*Open Hours:* preorder from the farm  
*Accepting:* cash, check



Daigle Farm, Brooklyn





## Little Dipper Farm

Venus and Lori Corriveau  
499 Wolf Den Road  
Brooklyn, CT 06234

860-412-0110  
[littledipperfarm.org](http://littledipperfarm.org)  
[info@littledipperfarm.org](mailto:info@littledipperfarm.org)

*Offering:* vegetables, fruit, cut flowers, teas, honey, value added products; event venue rentals, farm dinners and cooking classes.  
Details and event calendar on website  
*Open Hours:* Market at Little Dipper Farm: hours shift throughout the season. Check website for most up-to-date hours  
*Find us at:* our farm market  
*Accepting:* credit/debit, cash



## MIMBY Farm

Mark Olivo and Christine LeMay  
49 Pomfret Rd  
Brooklyn, CT 06234

860-377-8824  
[MIMBYFarm.com](http://MIMBYFarm.com)  
[mimbyfarm@gmail.com](mailto:mimbyfarm@gmail.com)

*Offering:* vegetables, eggs, local honey, cut flowers, some beekeeping supplies, seeds and plants  
*Open Hours:* seasonal farm store – please check our website for hours  
*Find us at:* our farm stand  
*Accepting:* credit/debit, cash, venmo, paypal



# CANTERBURY

## B-Z-B Farm

Amy and Andy Burroughs  
97 Barstow Road  
Canterbury, CT 06331

860-428-8364  
[facebook.com/bzbfarmllc](https://facebook.com/bzbfarmllc)  
[Bzbfarmllc@yahoo.com](mailto:Bzbfarmllc@yahoo.com)

*Offering:* USDA certified meat, poultry, eggs, dairy, soaps, cosmetics, bakery items, local honey  
*Open Hours:* Wed-Sat 11am-5pm; Sun 12pm-4pm  
*Find us at:* our farmstand and Ashford, Voluntown, Lisbon, Putnam Saturday, and all 4 NECT farmers markets  
*Accepting:* credit/debit, cash, check, SNAP/EBT



## Baldwin Brook Farm

Chris and Mavis Newton  
176 Depot Road  
Canterbury, CT 06331

401-419-1214  
[baldwinbrookfarm.com](http://baldwinbrookfarm.com)  
[baldwinbrookfarm@gmail.com](mailto:baldwinbrookfarm@gmail.com)

*Offering:* grass-fed raw Jersey milk, forest-raised heritage breed pork, eggs, pasture-raised chicken, ground beef, and these products from local farms: honey, maple syrup, cheese, yogurt, and ice cream  
*Open Hours:* Mon-Sat 10am-6pm, closed Sunday  
*Find us at:* our farm store, and many other retail locations which are listed on our website  
*Accepting:* cash, check



## Eagle Heights Farm

Anna Terwilleger  
223 North Canterbury Road  
Canterbury, CT 06331

860-823-9905  
[facebook.com/eagleheightsfarmllc](https://facebook.com/eagleheightsfarmllc)  
[eagleheightsfarmllc@aol.com](mailto:eagleheightsfarmllc@aol.com)

*Offering:* vegetables, eggs, plants, herbs, cut flowers  
*Find us at:* our farm stand and the Canterbury farmers market  
*Open hours:* 9am-sunset  
*Accepting:* cash, venmo



## Fenner Forest Farm

Richard Fenner  
540 Lisbon Road  
Canterbury, CT 06331

860-849-6706  
[fennerforestfarm.com](http://fennerforestfarm.com)  
[fenner@fennerforestfarm.com](mailto:fenner@fennerforestfarm.com)

*Offering:* mushrooms  
*Find us at:* Willimantic Food Co-op, Russo's Roots farmstand and CSA, and Coventry, Ledyard and Bozrah farmers markets  
*Accepting:* credit/debit, cash, check, venmo



## FoxView Farm

Olivia and Justin Benson  
21 Woodchuck Hill Road  
Canterbury, CT 06331

860-334-8824

facebook: FoxView Farm LLC  
farm.foxview@gmail.com

Offering: vegetables, blueberries, meat rabbits  
Open Hours: every day 10am-6pm  
Find us at: our farmstand and Lisbon, Ledyard, Ashford farmers markets  
Accepting: cash, check, FMNP



## Our Kids Farm

Wendee Dupont  
357 Barstow Road  
Canterbury, CT 06331

860-208-2024

ourkidsfarmsoap.com  
ourkidsfarm@yahoo.com

Offering: goat milk, soap, lotion, hand made ice cream at ice cream stand, pasture raised beef/pork/poultry, vegetables, cheese, eggs, dairy, baked goods, cut flowers, plants, handmade crafts, value added products, USDA certified meats  
Open Hours: Wed-Fri 11am-6pm, Sat-Sun 10am-6pm  
Find us at: Big Y markets, our website, local events  
Accepting: credit/debit, cash, check, paypal, venmo, SNAP/EBT



## Radical Roots Farm

Alycia and Ryan Salvas  
146 Buck Hill Road  
Canterbury, CT 06331

931-241-3325

radicalrootsct.com  
radicalroots.llc@gmail.com

Offering: regeneratively raised beef, pork, chicken, duck, and eggs a la carte, CSA, monthly shares, and wholesale. No-spray fruit and uncommon vegetable varieties. Offering shipping direct to your door, farm pickup, and meetups.  
Find us at: website  
Accepting: credit/debit, cash, check, paypal, venmo, afterpay, SNAP/EBT



## Russo's Roots

Libby Tarleton  
289 North Society Road  
Canterbury, CT 06331

860-556-9325

russosroots.com  
russosroots@gmail.com

Offering: vegetables, CSA  
Open Hours: Sat 9am-1pm  
Find us at: Willimantic farmers market  
Accepting: credit/debit, cash, check, SNAP/EBT



## Swampy Acres Farm

Frederick Penney  
350 Lisbon Road  
Canterbury, CT 06331

860-617-9012

instagram.com/swampyacresfarmcanterbury  
hicksdrivingfords@hotmail.com

Offering: vegetables, USDA inspected meat, eggs, honey, maple syrup  
Open Hours: by appointment  
Find us at: Scotland, Canterbury, Lisbon and Willimantic farmers markets  
Accepting: credit/debit, cash, check



## CHAPLIN

### Bats Of Bedlam Farm

Bob and Pat Dubos  
101 Bedlam Road  
Chaplin, CT 06235

860-455-9200

robert.dubos@gmail.com

Offering: maple syrup and products  
Open Hours: call ahead to see if available  
Find us at: Willimantic Food Coop, Coventry Public Market, BFF Supermarket in Uncasville  
Accepting: cash, check





## Buddha's Bees

Peter Polomski  
40 Tower Hill Road  
Chaplin, CT 06235

860-786-8670  
buddhasbeeshoney.com  
peterpolomski@yahoo.com

Offering: wildflower honey, flavored honey, and some beekeeping supplies

Find us at: Scotland and Lisbon farmers markets, refer to website for many other retail locations

Accepting: cash, credit



## Juniper Hill Farm

Darcy Rose  
115 Federal Road  
Chaplin, CT 06235

860-336-7688  
facebook.com/juniperhillfarmCT  
juniperhillfarmct@gmail.com

Offering: vegetables, beef, eggs, CSA

Find us at: through CSA, by appt by email for meat and custom orders

Accepting: cash, check



## KDCrop Farms

Kelly Caisse  
275 South Bear Hill Road  
Chaplin, CT 06235

203-592-4939  
kdcropfarms.com  
hello@kdcropfarms.com

Offering: vegetables, fruit, poultry, eggs, value added products, delivery within 6 miles of the farm, CSA

Open Hours: Sat-Sun 2-5pm Jul-Nov

Find us at: Ashford, Ellington, guest vendor at Stafford, CitySeed Wooster Square, Tolland and Storrs farmers markets

Accepting: credit/debit, cash, SNAP/EBT



## COLUMBIA

### Cambera Farm

Cori Antignani  
10 Wildwood Drive  
Columbia, CT 06237

860-942-1355  
camberafarmbakery.com  
camberafarm@gmail.com

Offering: goat meat and goat dairy, value added products

Find us at: local farmers markets and by appointment at the farm

Accepting: credit/debit, cash, check, venmo



### Cloverleigh Farm

Susan Mitchell  
448 Jonathan Trumbull Hwy (Rt. 87)  
Columbia, CT 06237

860-373-6324  
cloverleighfarm.com  
susan@cloverleighfarm.com

Offering: vegetables, herbs, cut flowers, CSA, seedlings

Open Hours: Wed 3-6pm, Sat 9am-12pm, Jun-Nov

Find us at: Willimantic Food Co-op and CSA pickup locations: on-farm in Columbia (Wed, Sat) or at Central Rock Gym in Glastonbury (Wed)

Accepting: credit/debit, cash, check



## Farm Product Key



Vegetables



Poultry



Herbs



Community Supported Agriculture



Farm to School



Fruit



Eggs



Flowers



Pick Your Own



Accepts SNAP



Meat



Dairy



Value Added Products



USDA Certified Organic

## East Willow Farm

Tom and Kyla Satkowski  
402 Route 66  
Columbia, CT 06237

860-538-2747

[eastwillowfarm.com](http://eastwillowfarm.com)

[facebook.com/eastwillowfarm](https://facebook.com/eastwillowfarm)

[eastwillowfarmllc@yahoo.com](mailto:eastwillowfarmllc@yahoo.com)

Offering: vegetables, fruit, meat, poultry, eggs, honey, meat CSA, local farm products in the farm store

Open Hours: Tue-Fri 10am-5pm, Sat 9am-4pm, Sun 9am-1pm

Find us at: our farm store

Accepting: credit/debit, cash, check



## Field Engineer Farm

Jason Arico  
102 Lake Road  
Columbia, CT 06237

860-899-6820

[facebook.com/FieldEngineerFarm](https://facebook.com/FieldEngineerFarm)

[fieldengineerfarm@gmail.com](mailto:fieldengineerfarm@gmail.com)

Offering: vegetables, fruit, eggs, CSA

Find us at: Willimantic farmers market

Accepting: cash, check, credit/debit



## The GOOD Farm

Jefferson Munroe  
544 Route 87  
Columbia, CT 06237

714-785-0112

[thegood.farm](http://thegood.farm)

[instagram.com/the\\_good\\_farm](https://instagram.com/the_good_farm)

[thegoodfarmmv@gmail.com](mailto:thegoodfarmmv@gmail.com)

Offering: meat, value added products, poultry

Find us at: farmers markets or by appointment at the farm

Accepting: credit/debit, cash, check



## Ramble Creek Farm

Josh Carnes  
448 Jonathan Trumbull Highway  
Columbia, CT 06237

518-769-0897

[ramblecreekfarm.com](http://ramblecreekfarm.com)

[josh@ramblecreekfarm.com](mailto:josh@ramblecreekfarm.com)

Offering: meat, poultry, mushrooms

Find us at: order online for Wed (3-6pm) or

Sat pickup (9am-12pm)

Accepting: credit/debit, cash



## Wilkinson Farm

Mat, Cindy, Molly, and Abby Wilkinson  
10A Chesbro Bridge Road  
Columbia, CT 06237

860-228-0030

[wilkinsonfarm.com](http://wilkinsonfarm.com)

[instagram.com/wilkinsonfarmct](https://instagram.com/wilkinsonfarmct)

[info@wilkinsonfarm.com](mailto:info@wilkinsonfarm.com)

Offering: maple syrup, eggs, produce, cut flowers

Find us at: Spruce Street farmers market in Manchester, Bozrah farmers market in Bozrah, and local craft fairs. Visit our website for our schedule.

Accepting: credit/debit, cash, SNAP at farmers market



## Farm Product Key



Vegetables



Poultry



Herbs

CSA

Community  
Supported  
Agriculture



Farm to  
School



Fruit



Eggs



Flowers



Pick Your Own



Accepts  
SNAP



Meat



Dairy

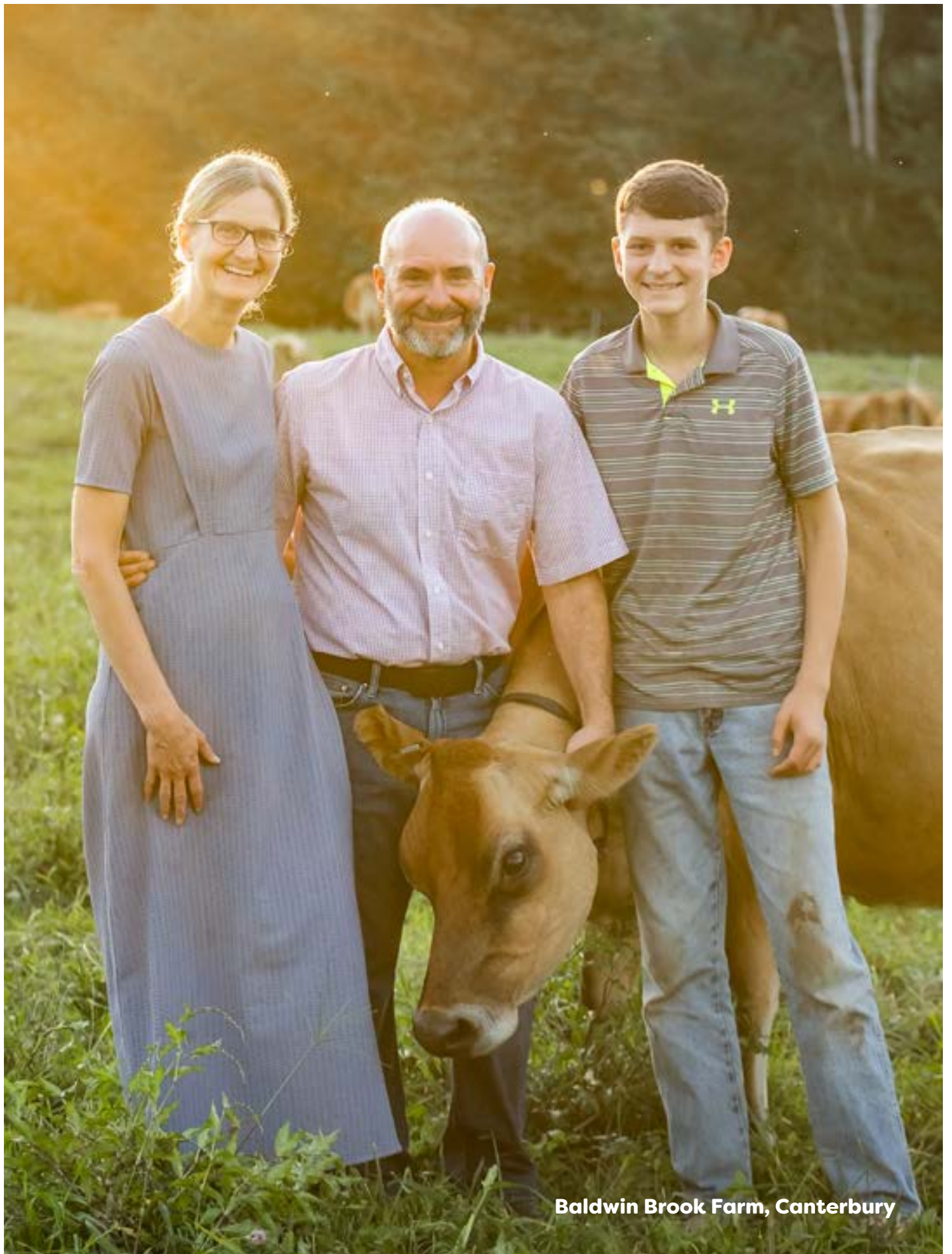


Value Added  
Products



USDA Certified  
Organic





Baldwin Brook Farm, Canterbury

# COVENTRY

## Creative Living Community of Connecticut

Bob McNamara  
2645 Boston Turnpike  
Coventry, CT 06238

860-967-2287  
[creativelivingcommunityofct.org/pages/clcc-farmstand](http://creativelivingcommunityofct.org/pages/clcc-farmstand)  
[bob@creativecl.org](mailto:bob@creativecl.org)

*Offering:* vegetables, eggs, microgreens, edible and cut flowers, delivery for restaurants, CSA  
*Open Hours:* May 23-October  
*Find us at:* our farmstand  
*Accepting:* credit/debit, cash, check



## Forest Mill Farm LLC

Kelley Barber  
29 Cassidy Hill Road  
Coventry, CT 06238

860-604-0936  
[forestmillfarm.com](http://forestmillfarm.com)  
[instagram.com/forestmillfarm](https://www.instagram.com/forestmillfarm)  
[info@forestmillfarm.com](mailto:info@forestmillfarm.com)

*Offering:* honey, maple syrup, maple candy, and maple cotton candy  
*Find us at:* online with free local delivery & easy pickup options. See our website for other locations.  
*Accepting:* cash, credit/debit, check, venmo



## Still River Farm

Andy Dappollonio  
271 Love Lane  
Coventry, CT 06238

860-742-5717  
[stillriverfarm.org](http://stillriverfarm.org)  
[adappollonio47@gmail.com](mailto:adappollonio47@gmail.com)

*Offering:* grains and corn meal, whole wheat flour, delivery  
*Find us at:* the farm, Willimantic Food Coop, Fiddleheads Food Coop in New London  
*Accepting:* cash, check



## Tardif Poultry Farm LLC

Joshua & Lisa Beebe, Samantha Sanborn  
89 Flanders Road  
Coventry, CT 06238

860-498-0599  
[tardiffarmandfeed.com](http://tardiffarmandfeed.com)  
[tardiffarm@gmail.com](mailto:tardiffarm@gmail.com)

*Offering:* vegetables, fruit, meat, eggs, dairy, value added products, poultry, honey, started plants, mulch, compost, ducks, chicks, chickens  
*Open Hours:* Tue-Fri 10am-6pm, Sat 10am-5pm, Sun 10am-4pm  
*Find us at:* our farm store  
*Accepting:* credit/debit, cash, check, venmo, paypal, apple pay



## Turtle Creek Farm

Regina Malsbary  
409 Nathan Hale Road  
Coventry, CT 06238

860-742-5483  
[rmalsbary@charter.net](mailto:rmalsbary@charter.net)

*Offering:* Coopworth sheep, breeding stock, meat, value added products, yarn and roving, delivery by appt only  
*Find us at:* sheep and wool festivals, Coventry farmers market  
*Accepting:* credit/debit, cash, check



## Farm Product Key



Vegetables



Poultry



Herbs



Community Supported Agriculture



Farm to School



Fruit



Eggs



Flowers



Pick Your Own



Accepts SNAP



Meat



Dairy



Value Added Products



USDA Certified Organic

# EASTFORD

## Buell's Orchard

Jeff and Jonathan Sandness  
108 Crystal Pond Road  
Eastford, CT 06242

860-974-1150  
buelisorchard.com  
instagram.com/buelisorchard  
facebook.com/buelisorchard  
information@buelisorchard.com

*Offering:* fruits, vegetables, apple cider  
*Open Hours:* June: Mon-Sat 8am-noon, Mon and Thu 6pm-8pm  
Summer-Sept: Mon 8am-7pm, Tue-Fri 8am-5pm, Sat 8am-3pm  
Labor Day-Oct, Mon-Sat 8am-5pm, Sun 1pm-5pm  
Nov: Mon-Fri 9am-4pm, Sat 9am-3pm  
Dec-Christmas Eve: Tues & Fri 9am-4pm, Sat 9am-3pm  
*Find us at:* our farm store  
*Accepting:* cash, credit/debit



## Eastford Farm

Paul and Julia Torcellini  
76 Weeks Road  
Eastford, CT 06242

860-315-5475  
eastfordfarm.com  
facebook.com/EastfordFarm  
eastfordfarm@yahoo.com

*Offering:* meat, eggs, poultry, pork, lamb, heritage turkey, duck eggs, pet chews (chicken feet) organic practices and certified organic and soy-free feed used  
*Open Hours:* 9am-dusk  
*Find us at:* our farm stand and the Willimantic Food Co-op  
*Accepting:* cash, check



# FRANKLIN

## Kindred Crossings

Lisa Kowalyshyn  
868 Route 32  
North Franklin, CT 06254  
kindredcrossingsfarm.com  
kindredcrossings@msn.com

*Offering:* USDA 100% grassfed Belted Galloway beef, non-GMO pastured Shropshire lamb & heritage Berkshire pork. A la carte, package deals & year-round flexible CSA shares. Value added products, yarn, raw fleece, breeding stock & feeder animals  
*Open Hours:* curbside by appointment  
*Find us at:* Willimantic Food Co-Op, The Grocery on Broad in Hartford, Alamo Specialty Food Market, Storrs and Willimantic farmers markets  
*Accepting:* credit/debit, cash, check, venmo



## Pete's Produce Farm

Peter Panzarella  
47 Kahn Road  
Franklin, CT 06254

860-861-3630  
facebook.com/petes.produce.farm  
peterpanzarella@gmail.com

*Offering:* vegetables, fruit, PYO, CSA  
*Open Hours:* farmstand open 10 AM - 4PM  
*Find us at:* our farmstand and Montville farmers market  
*Accepting:* cash, check, venmo, FMNP



## Hearthstone Hill Farm

Jennifer and Jonathan Miller  
83 Meeting House Hill Rd  
North Franklin CT 06254

860-336-1800  
hearthstonehillfarm.com  
hearthstonehillfarm@gmail.com

*Offering:* vegetables, meat, eggs, hay, fruit, and cut flowers  
*Open Hours:* farmstand open 9am-5pm 7 days a week  
*Find us at:* our farmstand, order via our website  
*Accepting:* cash, check, credit/debit





Buell's Orchard, Eastford





# GRISWOLD

---

## Campbell's Farm Stand

Campbell Family  
1 Campbell Road  
Griswold, CT 06351

860-376-1066

[facebook.com/campbellsfarmstand](https://facebook.com/campbellsfarmstand)

*Offering:* vegetables, fruit, pork, and beef from our 7th generation family farm, our retail store sells honey, maple syrup, pies, cider, dairy, and many more seasonal items from local farms

*Open Hours:* farm store open daily, see Facebook page for hours

*Find us at:* our farm store on Campbell Rd

*Accepting:* credit/debit, cash



## LakeView Farm Market

Vinnie Cofone  
14 Tabor Rd  
Griswold, CT 06351

860-608-1147

[facebook.com/vinniecofone](https://facebook.com/vinniecofone)

[vincentcofone@gmail.com](mailto:vincentcofone@gmail.com)

*Offering:* vegetables, fruit, eggs, beef, pork, herbs, flower baskets

*Open Hours:* 1pm-6pm daily

*Find us at:* our farm store, Voluntown and Downtown Norwich farmers markets

*Accepting:* credit/debit, cash, FMNP



# HAMPTON

---

## A & Z Apiaries

Adam Fuller  
143 South Brook Road  
Hampton, CT 06427

860-428-1731

[azapiaries.com](https://azapiaries.com)

[adam@azapiaries.com](mailto:adam@azapiaries.com)

*Offering:* wholesale honey and beeswax candles, retail bees in season and beekeeping supplies by appointment only.

*Find us at:* Willimantic Food Coop, Sweet Peas Market, Buell's Orchard, Woodstock Orchards, Kollis Orchard, Mackey's in Willimantic, and other fine locations as listed on our website



## Bright Acres Farm Sugarhouse

Judy Wilson and Richard Schenk  
46 Old Kings Highway  
Hampton, CT 06247

860-455-9654

[facebook.com/BrightAcresFarmSugarHouse](https://facebook.com/BrightAcresFarmSugarHouse)

[brightacresfarmct@gmail.com](mailto:brightacresfarmct@gmail.com)

*Offering:* maple syrup, maple cream, maple sugar, honey, eggs

*Open Hours:* Self serve stand open 7 days a week. Call for special orders, delivery, or if you want syrup mailed as a gift

*Find us at:* Sweet Peas, Full Moon Farm, Baldwin Brook Creamery, Sweet Grass Creamery, Small Potatoes, Windsong Farm, Bluebird Hill Farm, local farmers markets and festivals

*Accepting:* cash, check, venmo



## Buell's Dragonfly Farm

Judy Buell  
105 Griffin Road  
Hampton, CT 06247

860-428-5492

[buellsdragonflyfarm.com](https://buellsdragonflyfarm.com)

[bdf.hamptonct@gmail.com](mailto:bdf.hamptonct@gmail.com)

*Offering:* beef, maple syrup and confections, honey

*Open Hours:* by appointment

*Find us at:* our website, Buck's Soft Serve, Our Kids Farm, Buell's Orchard, Lapsley Orchard

*Accepting:* credit/debit, cash, check



## Full Moon Farm

Rob Miller, Molly Miller, Ann Withey  
130 Station Road  
Hampton, CT 06247

860-455-1196

[fullmoonfarmct.com](https://fullmoonfarmct.com)

[instagram.com/fullmoonfarmct](https://instagram.com/fullmoonfarmct)

[fullmoonfarmct@gmail.com](mailto:fullmoonfarmct@gmail.com)

*Offering:* vegetables, fruit, flowers, eggs, pork, beef, bread, baked goods, value added products

*Open Hours:* farm stand open Sat 10am-3pm June-November, self serve stand open 7 days a week

*Find us at:* our farm stand

*Accepting:* credit/debit, cash, check, venmo



## Lone Elm Farm

Keith & Diane Christadore  
Corner of Rt. 6 & Rt. 97  
Hampton, CT 06247

815-590-7995

[facebook.com/LoneElmFarmCT](https://www.facebook.com/LoneElmFarmCT)

Offering: sweet corn and vegetables

Open Hours: end of July thru end of October, sunrise-sunset

Find us at: our farm stand

Accepting: cash



## Organic Roots Farm at Popover Hill

Sam and Rosetta Fisher  
147 East Old Route 6  
Hampton, CT 06247

860-336-8823

[facebook.com/organicrootsfarmct](https://www.facebook.com/organicrootsfarmct)  
[rosettafisher@gmail.com](mailto:rosettafisher@gmail.com)

Offering: mushrooms, eggs, pork, value added products, bread and baked goods

Open Hours: Mon-Fri 11am-5pm, Sat 9am-5pm, closed Sun

Find us at: our farm stand

Accepting: debit/credit, cash, check



## Pebble Brook Maple Farm

Zach Burdick  
230 Kenyon Road  
Hampton, CT 06247

860-382-6602

[instagram.com/pebblebrookmaple](https://www.instagram.com/pebblebrookmaple)  
[pebblebrookmaple@yahoo.com](mailto:pebblebrookmaple@yahoo.com)

Offering: vegetables, eggs, maple syrup, delivery

Open Hours: self service always open

Find us at: 3 local IGA's, multiple farm stands, stores, restaurants, farmers markets

Accepting: cash, check



## HEBRON

### Black Cat White Dog Farm

Richard Rodriguez  
108 Martin Road  
Hebron, CT 06248

860-836-7062

[blackcatwhitedogfarm.com](https://www.blackcatwhitedogfarm.com)  
[blackcatwhitedogfarm@gmail.com](mailto:blackcatwhitedogfarm@gmail.com)

Offering: microgreens, fruit, eggs, cut flowers, delivery

Find us at: Manchester farmers market and through delivery

Accepting: cash



### Friendly Spirit Farm

Tina and Clint Grano  
234 Church Street  
Amston, CT 06231

860-324-6890

[instagram.com/friendly\\_spirit\\_farm](https://www.instagram.com/friendly_spirit_farm)  
[friendlyspiritfarm@gmail.com](mailto:friendlyspiritfarm@gmail.com)

Offering: vegetables, fruit, eggs

Open hours: Tue & Thu 9am-6pm, Wed & Fri 1-6pm,

Sat 9am-4pm, Sun 9am-2pm

Find us at: our farmstand

Accepting: credit/debit, cash, venmo



## Farm Product Key



Vegetables



Poultry



Herbs



Community  
Supported  
Agriculture



Farm to  
School



Fruit



Eggs



Flowers



Pick Your Own



Accepts  
SNAP



Meat



Dairy



Value Added  
Products



USDA Certified  
Organic



## Hills Farm

Greg and Kim Hills  
527 Gilead Street  
Hebron, CT 06248

860-680-8942

[sites.google.com/view/hillsfarm-hebronct/home](https://sites.google.com/view/hillsfarm-hebronct/home)  
[hillsfarmllc@gmail.com](mailto:hillsfarmllc@gmail.com)

*Offering:* meat, CSA, compost and top soil

*Open Hours:* call ahead

*Accepting:* cash, check, paypal, venmo



## Winding Brook Sugarhouse

Wayne Palmer  
254 Skinner Lane  
Hebron, CT 06248

860-228-0246

[winding.brook254@yahoo.com](mailto:winding.brook254@yahoo.com)

*Offering:* maple syrup and products

*Open Hours:* call ahead for purchasing

*Find us at:* Draghi's Vegetable Stand, Mackey's Farm Supply, Johnny Appleseeds, Deer Crest Farm, East Willow Farm

*Accepting:* cash, check



## KILLINGLY

### Blueberry Hill Organic Farm

Virginia Champagne  
314 Margaret Henry Road  
Danielson, CT 06239

860-719-3330

[blueberryhillorganicfarm.com](http://blueberryhillorganicfarm.com)

[facebook.com/BlueberryHillOrganicFarm](https://facebook.com/BlueberryHillOrganicFarm)

[blueberryhillorganicfarm@gmail.com](mailto:blueberryhillorganicfarm@gmail.com)

*Offering:* USDA Organic Certified pick-your-own berries

*Open Hours:* Tues, Thurs, Sat 12-5pm when berries are in.

Call ahead, check our website, eNewsletter, or Facebook for picking updates.

*Find us at:* our farmstand

*Accepting:* credit/debit, cash, check



## DeFazio Orchard and Greenhouses

Mitchell and Katie DeFazio  
1393 North Road  
Dayville, CT 06241

860-774-3799

[facebook.com/DeFazioOrchardandGreenhouses](https://facebook.com/DeFazioOrchardandGreenhouses)  
[defazioorchardandgreenhouses@gmail.com](mailto:defazioorchardandgreenhouses@gmail.com)

*Offering:* fruit, vegetables, pick your own, annual flowers and vegetable plants

*Open Hours:* Mon-Sat 9:30am-5pm, Sun 9:30am-4:30pm

*Find us at:* our farmstand

*Accepting:* cash, credit card



## Palazzi Orchard and Farm

Jean and Mark Palazzi  
322 Mashentuck Road  
Danielson, CT 06239

860-774-4363

[facebook.com/PalazziFarm](https://facebook.com/PalazziFarm)

[jeanpalazzi1@gmail.com](mailto:jeanpalazzi1@gmail.com)

*Offering:* vegetables, fruit, herbs, value added products, CSA

*Find us at:* Danielson farmers market Saturday

*Accepting:* cash



## Round Hill Ranch

Megan Johnston  
523 Danielle Way  
Dayville, CT 06241

401-227-4447

[roundhillranch.com](http://roundhillranch.com)

[roundhillranchri@gmail.com](mailto:roundhillranchri@gmail.com)

*Offering:* vegetables, eggs, value added products, poultry, pork, beef, chicken (all as cuts or whole and halves), goat milk soap and lotion, gift sets, firewood, Nigerian Dwarf goats, Nubian goats, chicks and chickens, livestock transportation, goat hoof trimming

*Open hours:* by appointment

*Find us at:* farmers markets or order online

*Accepting:* credit/debit, cash, check



# LEBANON

## Apis Verdi Farm

Philip Griffin  
988 Trumbull Highway  
Lebanon, CT 06249

860-377-5695  
apisverdifarm@gmail.com

Offering: vegetables  
Find us at: Stonington and Colchester Sunday farmers markets  
Accepting: cash, check, venmo



## Aries Crossing Farm

Nowosad Family  
888 Trumbull Highway  
Lebanon, CT 06249

860-428-2954  
ariescrossing@gmail.com

Offering: lamb  
Open Hours: direct sales, by appt  
Find us at: Lebanon farmers market  
Accepting: cash, check, paypal, venmo



## Bees N' Berries Farm

Alicia and Guthrie Dinda  
240 Levita Road  
Lebanon, CT 06249

860-377-7814  
facebook.com/beesnberriesfarm  
alc8301@yahoo.com

Offering: poultry, berries, honey, jams/jellies, baked goods made with our produce and honey, chickens fed only organic feed  
Open Hours: place orders via text or Facebook and pick up at farm stand at arranged time  
Find us at: the farm, and our weekend farmstand  
Accepting: cash, check



## Bluebird Hill Farm

Charlie and CJ Pogmore  
480 Trumbull Highway  
Lebanon, CT 06249

860-642-4663  
facebook.com/bluebirdhillfarmlebanonct  
bluebirdhillct@gmail.com

Offering: vegetables, fruit  
Open Hours: see our facebook page  
Find us at: Willimantic farmers market, our farmstand  
Accepting: credit/debit, cash, check



## Colgan Farm

Mitchel Colgan  
112 Kick Hill Road  
Lebanon, CT 06249

508-221-0502  
facebook.com/ColganFarm  
colganfarm@gmail.com

Offering: vegetables, value added products, raised organically  
Find us at: Ellington, Coventry, and Coventry winter farmers markets  
Accepting: cash, check, SNAP at farmers markets



## Connell Farm

Jack Connell  
57 Bender Rd  
Lebanon, CT 06249

860-450-2419  
facebook: Connell Farm LLC  
johnconnell946@gmail.com

Offering: USDA processed meats and pork, locally raised quality beef, individual cuts, whole, halves and quarters  
Find us at: our farm or order from our Facebook page  
Accepting: cash, check



## Farm Product Key



Vegetables



Poultry



Herbs



Community Supported Agriculture



Farm to School



Fruit



Eggs



Flowers



Pick Your Own



Accepts SNAP



Meat



Dairy



Value Added Products



USDA Certified Organic



Evans Farm, Lebanon



## Evans Farm

John, Mark, and Angel Evans  
157 Oliver Road  
Lebanon, CT 06249

860-705-0182

facebook: Evans Farm  
evansfarm4@aol.com

Offering: USDA processed meats, poultry, eggs, flowers  
Open Hours: Sat 9am-5pm  
Find us at: our farm stand  
Accepting: credit/debit, cash, check



## Goshen Hill Maples

Pete and Gayle Solari  
1040 Goshen Hill Road Extension  
Lebanon, CT 06249

860-465-6582

goshenhillmaples.com  
sales@goshenhillmaples.com

Offering: maple syrup  
Open Hours: call ahead to pickup at our sugarhouse  
Find us at: order online and at several retail locations in CT  
Accepting: credit/debit, cash, check



## Lathrop Farmstead

Angela Mia Colasuonno & Andrew Lathrop  
77 Randall Road  
Lebanon, CT 06249

860-237-9067

lathropfarm.com  
friends@lathropfarm.com

Offering: certified organic fruit, flowers, vegetables, herbs, maple syrup, chestnuts, honey, and eggs  
Open Hours: check website for online ordering and pick up hours  
Find us at: Lebanon farmers market  
Accepting: credit/debit, cash, SNAP at farmers market



## Le Bon Mouton Family Farm

Anni Cecil, Aaron Cecil  
165 Cook Hill Road  
Lebanon, CT 06249

617-676-8825

lebonmouton.com  
lebonmouton@gmail.com

Offering: lamb, eggs, poultry  
Open Hours: call ahead to pick up at farm or order online for delivery  
Accepting: cash, check, venmo, credit card



## Ledge Stone Orchard

Steve Preli  
119 West Town Street  
Lebanon, CT 06249

860-951-8021

ledgestoneorchard.com  
StevePreli@ledgestoneorchard.com

Offering: vegetables, fruit, eggs  
Open Hours: 7am-dark seasonally  
Find us at: Fiddleheads Food Coop for fruit and visit our farm store in a barn along the historic Lebanon Green  
Accepting: cash, check



## Lynch Hill Farm

Terrell Lavoie  
77 Lynch Road  
Lebanon, CT 06249

860-377-2445

bluehilltoo.square.site  
chicklet1489@gmail.com

Offering: USDA processed pasture raised chicken, turkey, pork and eggs! Handmade artisan goat milk soaps with milk from our Nubian dairy goats and handknit bath accessories.  
Find us at: Bozrah, Lebanon, Waterford and Tolland farmers markets; or on our website; free local delivery  
Accepting: credit/debit, cash, venmo, paypal, SNAP, FMNP



## Maggie's Farm

Carol Brzozowy & Ben Stankoski  
676 Goshen Hill Road  
Lebanon, CT 06249

860-642-6502; text 860-884-8206  
maggiesmushroomfarm@gmail.com

Offering: log grown shiitake & oyster mushrooms & seasonal wine cap mushrooms

Find us at: email for mail order or pick up at farm by appt, Willimantic Food Co-Op

Accepting: credit/debit, cash, check, square



## Rare Breed Cheese

Willow Chesmer  
49 Chappell Road  
Lebanon, CT 06249

860-617-8508  
facebook: Rare Breed Cheese  
info@rarebreedcheese.com

Offering: a variety of cheese from our dairy herd

Find us at: Lebanon farmers market, Evans Farmstand, The Hoot, Arrowhead Acres, farmers markets and other retail locations

Accepting: cash, credit



## Sugar Maple Farms

Chuck Haralson & Jim Jahoda  
631 Exeter Road  
Lebanon, CT 06249

860-208-2598  
sugarmaple farms.org  
jimandchuck@sugarmaple farms.org

Offering: eggs, maple syrup and products, honey

Open Hours: Mon-Sun 9am-5pm, but call ahead

Find us at: order from our website, and Stonington, Wethersfield, Colchester, Wooster Square, and Greenwich farmers markets, Mystic Country Store, Silverman's Farm, Ace Hardware in Hebron and Colchester, Boho Farm

Accepting: credit/debit, cash, check



## Sweet Acre Farm

Charlotte Ross and Jonathan Janeway  
Lebanon, CT 06249  
203-240-2724

sweetacrefarm.com  
info@sweetacrefarm.com

Offering: Certified Organic vegetables, cut flowers, & eggs

Find us at: Stonington farmers market (year-round), West Hartford's Blue Back Square farmers market (June-October), and the Willimantic Food Coop.

Accepting: credit/debit, cash, SNAP at Blue Back farmers market



## Tobacco Road Farm

Brian and Anita O'Hara  
373 Tobacco Street  
Lebanon, CT 06249

860-423-4834

Offering: vegetables, seeds

Find us at: Mansfield/Storrs and Tolland farmers markets and Willimantic Food Coop



## Village Hill Farm

Ethan Stearns  
256 Village Hill Road  
Lebanon, CT 06249

860-798-5545  
ethan.stearns@pw.utc.com

Offering: beef

Find us at: call the farm

Accepting: cash, check



## Farm Product Key



Vegetables



Poultry



Herbs



Community Supported Agriculture



Farm to School



Fruit



Eggs



Flowers



Pick Your Own



Accepts SNAP



Meat



Dairy



Value Added Products



USDA Certified Organic





Spring Valley Student Farm, Mansfield



# LISBON

## Cedar Song Apiary

Jim Adams  
124 North Burnham Hwy  
Lisbon, CT 06351

860-861-1411  
cedarsongapiary@gmail.com

Offering: vegetables, honey, vermicompost (worm castings), following organic practices  
Open Hours: hours vary at our farm stand  
Find us at: our farm stand and Lisbon Farmers Market  
Accepting: credit/debit, cash, check, FMNP



## Grant's Berry Patch

Christopher and Michelle Grant  
188 Mell Road  
Lisbon, CT 06351

860-376-5625  
grantsberrypatch.net  
grantsberrypatch@att.net

Offering: vegetables, fruit, pick your own, pumpkins, mums & fall decorative items, CSA  
Open Hours: June: 9am to 12 noon M-F, 9am-4pm Sat & Sun, From July through October: 9am to 5:30pm M-F, 9am-4pm Sat & Sun  
Find us at: our farm stand and Lebanon Farmers Market  
Accepting: cash, check, FMNP



# MANSFIELD

## Birch Stone Farm

Sarah Meisterling & Jonathan Muszynski  
275 Browns Road  
Mansfield, CT 06268

instagram.com/birchstonefarmct  
birchstonefarmct@gmail.com

Offering: eggs, maple and birch syrups  
Find us at: our farm for pick-up by appt, or we can deliver!  
Accepting: cash, check, venmo



## Cobblestone Farm

Diane Dorfer  
87 Bassetts Bridge Road  
Mansfield Center, CT 06250

cobblestonefarmcsa.com  
dianedorfer@gmail.com

Offering: vegetables, flowers, CSA  
Find us at: our CSA and local public school lunches  
Accepting: cash, check



## Fern Mill Farm

Alexander Eitland & Tim Bielaczyc  
955 Warrenville Rd  
Mansfield, CT 06250

860-508-3124  
instagram.com/fernmillfarm  
fernmillfarm@gmail.com

Offering: vegetables, fruit, eggs, poultry, rabbit, mushrooms, and flowers. We follow organic practices.  
Find us at: farmers markets, Willimantic Food Co-op, restaurants  
Accepting: credit/debit, cash, check, venmo, cashapp



## Farm Product Key



Vegetables



Poultry



Herbs

CSA

Community Supported Agriculture



Farm to School



Fruit



Eggs



Flowers



Pick Your Own



Accepts SNAP



Meat



Dairy



Value Added Products



USDA Certified Organic

## Hickory Hill Farms

Curtis Sirico  
523 Woodland Rd  
Storrs Mansfield, CT 06268

860-391-3918  
[instagram.com/hickoryhillfarmsct](https://www.instagram.com/hickoryhillfarmsct)  
[facebook.com/hickoryhillfarmsct](https://www.facebook.com/hickoryhillfarmsct)  
[hickoryhill.curt@gmail.com](mailto:hickoryhill.curt@gmail.com)

*Offering:* vegetables, fruit, eggs, poultry, pumpkins  
*Open Hours:* daylight hours  
*Find us at:* our farmstand  
*Accepting:* cash, venmo, paypal



## Forever Farm CT

Erin Richter  
494 Wormwood Hill Road  
Mansfield Center, CT 06250

860-374-8412  
[facebook.com/foreverfarmct](https://www.facebook.com/foreverfarmct)  
[forever.farm.ct@gmail.com](mailto:forever.farm.ct@gmail.com)

*Offering:* vegetables, fruit, meat, eggs, value added products, poultry, chestnuts, fresh and dried herbs, we follow natural practices and feed organic feeds to our livestock  
*Open Hours:* Tue 2-5:30pm, Wed 1-5pm, Thu 3-6pm, Sun 1-4pm  
*Find us at:* our farmstand and Storrs farmers market  
*Accepting:* cash, check, venmo, paypal



## MadmanMicros

Paul Tamsin  
431 Mulberry Road  
Mansfield Center, CT 06250

860-208-8006  
[facebook: MadmanMicros](https://www.facebook.com/MadmanMicros)  
[madmanmicros@gmail.com](mailto:madmanmicros@gmail.com)

*Offering:* microgreens, edible flowers, delivery  
*Find us at:* Coventry, Coventry Winter, Willimantic, and Willimantic Winter farmers markets; Amano Taco, Fenton River Grill  
*Accepting:* cash, credit/debit, venmo, SNAP at Willimantic farmers market



## Mountain Dairy

Craig Stearns  
50 Stearns Road  
Storrs, CT 06268

[mountaindairy.com](http://mountaindairy.com)

*Offering:* dairy, value added products, delivery  
*Open Hours:* home delivery only  
*Find us at:* Big Y, IGA in Windham and Hebron, Price Chopper in Putnam, Highland Park Market, Willimantic Food Co-Op, Putnam Supermarket  
*Accepting:* credit/debit



## Riverview Farm

Michael Bergeron  
205 Crane Hill Road  
Mansfield, CT 06268

860-573-7172  
[facebook.com/RiverviewFarmCoventryCT](https://www.facebook.com/RiverviewFarmCoventryCT)  
[riverviewfarmcoventry@gmail.com](mailto:riverviewfarmcoventry@gmail.com)

*Offering:* vegetables, fruit, flowers, CSA  
*Open Hours:* Tue & Thu 3-6pm  
*Find us at:* our farmstand and Coventry, Hartford North End, and Ellington farmers markets  
*Accepting:* cash, check, FMNP



## Shooks Apiaries

Dominic Shooks  
828 Wormwood Hill Road  
Storrs, CT 06268

860-933-3480  
[facebook.com/shooksapiariesllc](https://www.facebook.com/shooksapiariesllc)  
[domshooks@charter.net](mailto:domshooks@charter.net)

*Offering:* honey & wax products, duck & chicken eggs, delivery  
*Find us at:* Willimantic farmers market and by appointment  
*Accepting:* credit/debit, cash, venmo, SNAP at farmers market



## Shundahai Farm

Raluca Mocanu and Ed Wazer  
253 Maple Road  
Storrs, CT 06268

[mail@shundahaifarm.com](mailto:mail@shundahaifarm.com)

*Offering:* vegetables, fruit, meat, eggs, 100% no spray  
*Open Hours:* Tue 3-6pm or as announced in our weekly email.  
Email us if you want to receive our weekly email.  
*Find us at:* Tues 3-6pm at our farmstand, find our veggies at Oyster Club, Engine Room, and Grass and Bone restaurants in Mystic, CT, as well as Fiddleheads Food Coop in New London  
*Accepting:* cash, check



## Spring Valley Student Farm

Jessica Larkin-Wells  
104 Spring Manor Road  
Storrs Mansfield, CT 06268

203-215-9345

[dining.uconn.edu/spring-valley-farm](http://dining.uconn.edu/spring-valley-farm)  
[jessica.larkin-wells@uconn.edu](mailto:jessica.larkin-wells@uconn.edu)

*Offering:* vegetables, small fruit, herbs, and cut flowers  
*Open Hours:* open for on-farm tours and volunteering some Fridays (see website for details!)  
*Find us at:* Thu 11:30am-1:30pm on UConn Storrs campus, outside Homer Babbidge Library, July-mid Oct.  
*Accepting:* credit/debit



## Varga Family Farm

Chris and Justin Varga  
10 River Road  
Mansfield Center, CT 06250

860-487-9127

[facebook.com/vargafamilyfarm](https://facebook.com/vargafamilyfarm)  
[Vargafamilyfarm@gmail.com](mailto:Vargafamilyfarm@gmail.com)

*Offering:* vegetables, meat, eggs, maple syrup, honey, wood products  
*Open Hours:* 7am-7pm  
*Find us at:* our farm stand, Storrs and Tolland farmers markets, GM Thompson and Sons  
*Accepting:* credit/debit, cash, check, FMNP, farm stand is cash and check only



## PLAINFIELD

### 18th Century Purity Farm

Paul and Jo-Ann Desrochers  
154-156 Plainfield Pike Road  
Plainfield, CT 06374

860-564-2154, 860-564-8733  
[facebook: 18th Century Purity Farms](https://facebook.com/18thCenturyPurityFarms)  
[pauldesrochers.46@gmail.com](mailto:pauldesrochers.46@gmail.com)

*Offering:* vegetables, fruit, pick your own apples  
*Open Hours:* PYO Mon-Sat 2-6pm starting early Sept  
*Find us at:* our farm, Stonington, Coventry, Lisbon farmers markets  
*Accepting:* cash, check, credit/debit, FMNP



## Farm Product Key



Vegetables



Poultry



Herbs

CSA

Community Supported Agriculture



Farm to School



Fruit



Eggs



Flowers



Pick Your Own



Accepts SNAP



Meat



Dairy



Value Added Products



USDA Certified Organic



## Bad Toad Farm

Jeff and Kristen Cornell  
98 Cornell Road  
Plainfield, CT 06062

860-334-1138  
facebook.com/badtoadfarm

Offering: vegetables, pork, beef, eggs  
Open Hours: call ahead from 9-5pm Mon-Fri  
Find us at: our farm by calling, Killingly farmers market, Agway in Plainfield, Plainfield Winter Market  
Accepting: cash, check, credit



## RAKZ Farm

Amber Desjardins  
26 All Hallows Road  
Moosup, CT 06239

860-230-5506  
facebook: RAKZ Farm  
amberlucas0@gmail.com

Offering: vegetables, meat, value added products, maple syrup, pigs by whole and half, CSAs for meat and veggies  
Find us at: farmers markets  
Accepting: credit/debit, cash



## Dovehill Farm

Sylvia, John, and Jen Wielk  
110 Plainfield Road  
Moosup, CT 06354

860-771-9110, 203-804-1362  
dovehillfarmct.com  
dovehillfarmllc@gmail.com

Offering: sourdough bread and baked goods, eggs, honey, pickles, garlic, wool yarn, wood and wood products  
Open Hours: by appointment  
Find us at: Waterford, North Stonington, Groton, and Lisbon farmers markets  
Accepting: credit/debit, cash, FMNP certified



## Stone Hill Farm

Jennie and Dan Kapszukiewicz  
265 Gendron Road  
Plainfield, CT 06374

860-884-6629  
stonehillfarmct.com  
stonehill.eatfromfarms.com  
grassfed@stonehillfarmct.com

Offering: USDA processed beef, eggs  
Find us at: our farm by appointment, online farm store  
Accepting: cash, check



## Rachel's Veggies and Berries

Rachel Fraleigh  
106 Cranska Road  
Moosup, CT 06354

860-564-3615  
facebook: Rachels Veggies and Berries  
rfraleigh@yahoo.com

Offering: vegetables, fruit, pick your own blueberries  
Open Hours: call ahead  
Find us at: Lisbon, Plainfield, Willimantic farmers markets  
Accepting: cash, check



## Farm Product Key



Vegetables



Poultry



Herbs



Community Supported Agriculture



Farm to School



Fruit



Eggs



Flowers



Pick Your Own



Accepts SNAP



Meat



Dairy



Value Added Products



USDA Certified Organic



Lapsley Orchard, Pomfret

# PRESTON

## CT Wagyu

Tim Spanos  
175 Miller Rd  
Preston, CT 06365

860-917-0855  
ctwagyu.com  
tims@ctwagyu.com

*Offering:* Japanese Wagyu beef cuts, subscription boxes  
*Open Hours:* by appointment  
*Find us at:* online with shipping, pickup and delivery  
*Accepting:* credit/debit, cash, venmo, paypal



## LoPresti Farm

Ricky Fleming  
5 Hollowell Rd  
Preston, CT 06365

860-887-5292  
facebook: LoPresti Farm  
loprestifarm.com

*Offering:* vegetables, fruit, eggs, seedling plants, flowers, herbs, baked goods, and local farm products  
*Open Hours:* 9am - 5pm, 7 days a week  
*Find us at:* our farm store  
*Accepting:* credit/debit, cash, check



## Sweet Grass Creamery

Ed Mattern and Carol Wojtkun  
51 Mattern Road  
Preston, CT 06360

860-861-4921  
sweetgrass-creamery.com  
sweetgrasscreamery@gmail.com

*Offering:* milk, cream, yogurt, and cheese from our herd of Jersey cows processed at our creamery on our farm. Our farm store also offers many products from local farms. Ordering for pickup and delivery available.

*Open Hours:* 9am - 6pm, 7 days a week

*Find us at:* our farm store, local retail stores and restaurants

*Accepting:* credit/debit, cash, check



# POMFRET

## Easy Acres Gnomestead

Stacey Beck  
318 Fay Rd  
Pomfret Center, CT 06259

860-230-1237  
easyacresgnomestead.com  
easyacresgnomestead@gmail.com

*Offering:* vegetables, fruit, eggs, raising critically endangered Gulf Coast native sheep for wool, yarn, and meat

*Open Hours:* 6am - 8pm daily

*Find us at:* our farmstand, Stafford, Putnam and Coventry farmers markets, and online

*Accepting:* credit/debit, cash, venmo, paypal



## Farm Product Key



Vegetables



Poultry



Herbs



Community Supported Agriculture



Farm to School



Fruit



Eggs



Flowers



Pick Your Own



Accepts SNAP



Meat



Dairy



Value Added Products



USDA Certified Organic



## Lapsley Orchard

John and Patti Wolchesky  
403 Orchard Hill Road  
Pomfret Center, CT 06259

860-928-9186  
[lapsleyorchard.com](http://lapsleyorchard.com)  
[Info@lapsleyorchard.com](mailto:Info@lapsleyorchard.com)

*Offering:* vegetables, fruit, meat, poultry, eggs, dairy, herbs, cut flowers, pick your own, CSA  
*Open Hours:* 10am-6pm every day, Mid Jul-Dec 24  
*Find us at:* our retail store  
*Accepting:* credit/debit, cash, check, SNAP/EBT



## Red Tail Valley Farm

Valerie Champany  
16 Tyott Road  
Pomfret Center, CT 06259

facebook: Red Tail Valley Farm  
[redtailvalleyfarm@protonmail.com](mailto:redtailvalleyfarm@protonmail.com)

*Offering:* vegetables, eggs, fruit, herbs, value added products, CSA, pasture raised pork and chicken  
*Open Hours:* Sat 9am-2pm; Mon, Tue, Thu, Fri 3-7pm  
*Find us at:* farm store, farmers markets  
*Accepting:* credit/debit, cash



## Sunny Patch Farm

Bill Wood  
42 Cheney Road  
Pomfret Center, CT 06259

203-578-6235  
[facebook.com/sunnypatchfarmct](https://facebook.com/sunnypatchfarmct)  
[sunnypatchfarm@gmail.com](mailto:sunnypatchfarm@gmail.com)

*Offering:* honey  
*Open Hours:* through appointment by email  
*Accepting:* credit/debit, cash



## We-Lik-It Farm

The Rich Family  
728 Hampton Road (Rt. 97)  
Pomfret Center, CT 06259

860-974-1095  
[we-lik-it.com](http://we-lik-it.com)  
[facebook.com/welikiticecream](https://facebook.com/welikiticecream)  
[welikitct@gmail.com](mailto:welikitct@gmail.com)

*Offering:* maple syrup, USDA certified beef and pork, eggs, fresh farmstead ice cream  
*Open Hours:* daily 11am-8pm; Summer hours 11am-9pm starting Memorial Day weekend and ending Labor Day  
*Find us at:* our farmstand, Our Kids Farm, by appointment  
*Accepting:* credit/debit, cash, check



## Unbound Glory Farm

Courtney and Adam Squire  
294 Hampton Road  
Pomfret Center, CT 06259

860-420-9167  
[unboundgloryfarm.com](http://unboundgloryfarm.com)  
[instagram.com/farmunboundglory](https://instagram.com/farmunboundglory)  
[info@unboundgloryfarm.com](mailto:info@unboundgloryfarm.com)

*Offering:* vegetables, flowers, wood-fired pizza, CSA, regenerative ag practices  
*Open Hours:* pizza events and veggie orders by email invitation only (not open to the general public. To sign up for our email list, visit our website!)  
*Find us at:* Putnam Saturday farmers market, wood-fired pizza on the farm  
*Accepting:* credit/debit, cash, check, venmo



## Windsong Farm Blueberries

Donna Dufresne  
54 Tull Lane  
Pomfret Center, CT 06259

860-465-7228  
[facebook: Windsong Farm Blueberries](https://facebook.com/WindsongFarmBlueberries)  
[windsong@snet.net](mailto:windsong@snet.net)

*Offering:* fruit, pick your own, vegetables, herbs, teas and spices, organic practices  
*Open Hours:* 9am-6pm 7 days/wk Jul-Aug  
*Find us at:* our store and pick-your own at the farm stand  
*Accepting:* credit/debit, cash, check





**Easy Acres Gnomestead, Pomfret**

# PUTNAM

## Assawaga Farm

Yoko Takemura & Alex Carpenter  
626 Providence Pike  
Putnam, CT 06260

347-693-3492  
assawagafarm.com  
assawagafarm@gmail.com

Offering: organic vegetables, herbs and cut flowers, BOTL Farm meat/poultry/eggs (bi-weekly) and seedling sale each spring  
Open Hours: Sat 9am-12pm  
Find us at: our Saturday farm market May-Thanksgiving  
Accepting: credit/debit, cash, check



# SCOTLAND

## Barton Farms

Julie and Todd Barton  
35 Huntington Road  
Scotland, CT 06264

860-304-5046  
bartonfarmsct.com  
bartonfarmsct@gmail.com

Offering: vegetables, fruit, meat, poultry, eggs, seedlings, flowers  
Open Hours: seasonally from 10am-dusk daily  
Find us at: Putnam Saturday market and our farm stand  
Accepting: cash, check



## Soul Leaf Farm

Larkin Trainor  
88 Cemetery Road  
Scotland 06330

401-219-1758  
into-the-earth.square.site  
soulleafmicrogreens@gmail.com

Offering: vegetables, fruit, eggs, skincare products, workshops, apothecary CSA, edible flowers  
Open Hours: Wed-Sun 11am-7pm  
Find us at: our farmstand  
Accepting: cash



## Farm Product Key



Vegetables



Poultry



Herbs



Community Supported Agriculture



Farm to School



Fruit



Eggs



Flowers



Pick Your Own



Accepts SNAP



Meat



Dairy



Value Added Products



USDA Certified Organic



# SPRAGUE

## Pond View Farm

Sara Palmer  
110 Bushnell Hollow Rd  
Sprague, CT 06330

860-608-5126  
[pondviewfarm.org](http://pondviewfarm.org)  
[pondviewfarm18@gmail.com](mailto:pondviewfarm18@gmail.com)

*Offering:* vegetables, beef, pork, chicken, eggs, all pastured raised and using organic practices, our farm stand also sells products from local farms, meat shares available

*Open Hours:* Monday & Wednesday 2pm-5pm, Saturday 10am-2pm also by appointment

*Find us at:* our farm stand and online ordering

*Accepting:* credit/debit, cash



## Stonewall Apiary

Stuart Woronecki  
120 Inland Road  
Versailles, CT 06383

860-964-3532  
[stonewallapiary.com](http://stonewallapiary.com)  
[facebook.com/stonewallapiary](https://facebook.com/stonewallapiary)  
[instagram.com/stonewall\\_apiary](https://instagram.com/stonewall_apiary)  
[office@stonewallapiary.com](mailto:office@stonewallapiary.com)

*Offering:* honey, creamed honey, honey butter, package bees, nucs and mated queens (in season) and beekeeping supplies

*Open Hours:* every Saturday from 9am-1pm, except holidays

*Find us at:* our farm stand and Coventry Farmers Market, Chester Farmers Market, farm stands and stores throughout Connecticut

*Accepting:* credit/debit, cash, check



# STERLING

## Betsy's Stand

Betsy Molodich  
633 Ekonk Hill Road  
Sterling, CT 06354

860-334-9442  
[facebook.com/betsys.stand](https://facebook.com/betsys.stand)  
[mmolodich@snet.net](mailto:mmolodich@snet.net)

*Offering:* vegetables, fruit, eggs, CSA, greenhouse plants

*Open Hours:* 9am-5pm every day

*Find us at:* our retail store and Danielson, Brooklyn, Plainfield, Putnam farmers markets

*Accepting:* credit/debit, cash, check, SNAP/EBT



## Berry Sweet Farm

Mike, Lauren and Trey  
218 Calvin French Road  
Sterling, CT 06377

860-412-4144  
[facebook.com/bzberries](https://facebook.com/bzberries)  
[bzberryfarm@gmail.com](mailto:bzberryfarm@gmail.com)

*Offering:* fruit, pick your own, pre-picked blueberries

*Open Hours:* check our website to see when we are open

*Find us at:* our farm

*Accepting:* cash, check



## Farm Product Key



Vegetables



Poultry



Herbs



Community  
Supported  
Agriculture



Farm to  
School



Fruit



Eggs



Flowers



Pick Your Own



Accepts  
SNAP



Meat



Dairy



Value Added  
Products



USDA Certified  
Organic

## Country Critters Farm

Bailey Hirschboeck  
257 Snake Meadow Hill Road  
Sterling, CT 06377

860-315-4177

[country-critters-farm.com](http://country-critters-farm.com)

[facebook.com/countrycrittersfarmct](https://facebook.com/countrycrittersfarmct)

[countrycrittersf@gmail.com](mailto:countrycrittersf@gmail.com)

*Offering:* vegetables, eggs, poultry, goat and sheep milk soaps, baked goods, agritourism

*Open Hours:* visit our Facebook page for farmstand schedule

*Find us at:* our farmstand

*Accepting:* cash



## Ekonk Hill Turkey Farm

227 Ekonk Hill Road  
Sterling, CT 06354  
860-564-0248

[ekonkhillturkeyfarm.com](http://ekonkhillturkeyfarm.com)

[facebook.com/ekonkhillturkeyfarm](https://facebook.com/ekonkhillturkeyfarm)

[info@ekonkhillturkeyfarm.com](mailto:info@ekonkhillturkeyfarm.com)

*Offering:* vegetables, USDA processed beef, pork, lamb, and goat, pasture raised turkey, eggs, dairy and ice cream

*Open Hours:* store hours vary seasonally, check our Facebook page for updates

*Find us at:* our farm store, Coventry and Downtown Milford farmers markets

*Accepting:* credit/debit, cash, check



## Granite Apiaries

Dustin Taylor  
1077 Plainfield Pike  
Sterling CT, 06373

860-564-8516

[dustintay80@gmail.com](mailto:dustintay80@gmail.com)

*Offering:* fall vegetable crops and honey

*Find us at:* our farmstand during daylight hours

*Accepting:* credit/debit, cash, check



## THOMPSON

### Blackmer Farm

Daniel & Michaela Kelley  
438 Quinebaug Road (Rte. 131)  
North Grosvenordale, CT 06255

860-576-2191

[facebook.com/BlackmerFarm](https://facebook.com/BlackmerFarm)

[blackmerfarmllc@gmail.com](mailto:blackmerfarmllc@gmail.com)

*Offering:* annual & perennial flowers, hanging baskets, vegetable plants, sweet corn, tomatoes, vegetables, beef, pork, chicken, mums, pumpkins, hay

*Open Hours:* May-Oct: Mon-Fri 10am-6pm, Sat-Sun 10am-5pm;

Winter: call ahead for meat pick up!

*Find us at:* our greenhouse/farm stand and the Saturday Putnam farmers market. Follow us on Facebook for seasonal updates!

*Accepting:* cash, check, credit/debit



### The Farmer's Porch at Fort Hill Farms

Kies, Jared and Kristin  
157 O'Leary Road  
Thompson, CT 06255

860-234-1153

[forthillfarms.com](http://forthillfarms.com)

[facebook.com/forthillfarmscot](https://facebook.com/forthillfarmscot)

[herrootsrundeep@gmail.com](mailto:herrootsrundeep@gmail.com)

*Offering:* milk, cheese, eggs, butter, cream cheese, and products from local farms: beef, pork, honey, maple syrup, baked goods, and much more

*Open Hours:* 24/7. See facebook page for updates on products.

*Find us at:* the farm stand

*Accepting:* cash



### New Boston Beef The Kitchen at New Boston Beef

Jonathan & Sarah Eddy  
9 Fabyan Woodstock Rd  
North Grosvenor Dale, CT 06255

860-315-2408, 860-315-7580

[newbostonbeefllc.com](http://newbostonbeefllc.com)

[newbostonbeefsals@gmail.com](mailto:newbostonbeefsals@gmail.com)

[newbostonbeefkitchen@gmail.com](mailto:newbostonbeefkitchen@gmail.com)

*Offering:* grass fed beef, garden fed pigs, flowers, pumpkins, vegetables, prepared meals made from our protein and produce alongside that of supporting local farms; educational hands-on classes, community and private events

*Open Hours:* Sun 10am-2pm, Mon-Fri 10am-6pm, Sat 10am-4pm.

Follow us on Facebook for the most up to date menu and hours!



## Collinswood Mushrooms

Randy Collins  
999 Tolland Stage Rd  
Tolland, CT 06084

860-906-2063  
collinswoodmushrooms.com  
instagram.com/collinswood\_mushrooms  
randy@collinswoodmushrooms.com

Offering: gourmet mushrooms and mushroom made products  
Find us at: Willimantic, Storrs, Ellington, Tolland, and Ashford farmers markets, restaurants, local farm stands  
Accepting: credit/debit, cash, check, SNAP and FMNP at farmers markets



## E&J Family Farm

Jeremy Curnow  
157 Crystal Lake Rd  
Tolland, CT 06084

203-710-1890  
facebook: E&J Family Farm  
jeremycurnow@comcast.net

Offering: vegetables, eggs, plants (herbs, vegetables, annuals, perennials), rabbits  
Open Hours: Tues-Fri 12-6pm and Sat-Sun 10am-6pm  
Find us at: our farm stand or Tolland Green Market  
Accepting: credit/debit, cash



## Little River at Lemek Farms

Jason St Louis & Larry Lemek  
343 Goose Lane  
Tolland, CT 06084

860-933-0336  
facebook: Lemek Farms LLC - Larry Berries and much more  
facebook.com/thefarmstandatlemekfarm  
lildigmore@yahoo.com

Offering: vegetables, fruit, eggs, flowers, pick your own blueberries and raspberries, CSA  
Open Hours: 10am-6pm Monday-Sunday  
Find us at: our farm stand  
Accepting: credit/debit, cash, check

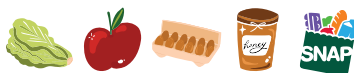


## Lucky Clover Farm

Tim & Sheri Sullivan  
27 Ellen Drive  
Tolland, CT 06084

860-212-2249  
facebook.com/happywithanimals  
luckycloverfarm9@gmail.com

Offering: vegetables, fruit, eggs, alpaca products  
Find us at: Tolland Green farmers Market  
Accepting: credit/debit, cash, venmo, SNAP



## Roots on Russell

Kathryn Bombard and Tim Schoenborn  
21 Russell Drive  
Tolland, CT 06084

860-402-4390  
instagram.com/rootsonrussell  
rootsonrussell@gmail.com

Offering: vegetables, fruit, herbs, following organic practices  
Find us at: Tolland and Stafford Farmers Market, local delivery  
Accepting: cash, venmo, FMNP



## Farm Product Key



Vegetables



Poultry



Herbs



Community Supported Agriculture



Farm to School



Fruit



Eggs



Flowers



Pick Your Own



Accepts SNAP



Meat



Dairy



Value Added Products



USDA Certified Organic





Collinswood Mushrooms, Tolland

# UNION

## Hidden Blossom Farm

Joe Orefice  
18 Old Barrows Road  
Union, CT 06076

518-354-3170  
[hiddenblossomfarm.com](http://hiddenblossomfarm.com)  
[instagram.com/hiddenblossomfarm](https://www.instagram.com/hiddenblossomfarm)  
[hiddenblossomfarm@gmail.com](mailto:hiddenblossomfarm@gmail.com)

*Offering:* vegetables, figs, grass fed beef  
*Open Hours:* variable  
*Find us at:* our farm stand and Sturbridge farmers market  
*Accepting:* credit/debit, cash, check, venmo



## Union Bee Company

Thomas Bacon  
6 Bush Road  
Union, CT 06076

860-458-9719  
[facebook.com/unionbeecompany](https://www.facebook.com/unionbeecompany)  
[unionbeecompany@gmail.com](mailto:unionbeecompany@gmail.com)

*Offering:* honey and beekeeping supplies  
*Open Hours:* Sat-Sun 6am-8pm  
*Find us at:* our self-serve farmstand and Union, CT town events  
*Accepting:* cash



# WILLINGTON

## Growing Goodness Farm

John Tehan  
26 Eldredge Mills Road  
Willington, CT 06279

866-721-7308  
[growinggoodness.shop](http://growinggoodness.shop)  
[john@growinggoodnessfarm.com](mailto:john@growinggoodnessfarm.com)

*Offering:* microgreens  
*Find us at:* our website delivering locally to Willington, Tolland, Rockville, Ellington, Storrs, Mansfield, Coventry, Stafford, Union and Ashford  
*Accepting:* credit/debit



## Willow Valley Farm

Spencer Cartabiano and Jackie Kulig  
39 Moose Meadow Road  
Willington, CT 06279

860-933-5842  
[wvfcsa.wordpress.com](http://wvfcsa.wordpress.com)  
[wvfcsa@gmail.com](mailto:wvfcsa@gmail.com)

*Offering:* vegetables, fruit, no spray, rye and wheat flour, CSA  
*Open Hours:* Sat-Sun 9am-dusk, Jul-Sep  
*Find us at:* Ashford, Tolland, Storrs farmers markets  
*Accepting:* cash, check



## Farm Product Key



Vegetables



Poultry



Herbs



Community  
Supported  
Agriculture



Farm to  
School



Fruit



Eggs



Flowers



Pick Your Own



Accepts  
SNAP



Meat



Dairy



Value Added  
Products



USDA Certified  
Organic

# WINDHAM

---

## Bliss Plant and Flower Company

Casey Walsh  
51 Scarborough Road  
Windham, CT 06280  
860-634-1524  
[caseydwalth8@gmail.com](mailto:caseydwalth8@gmail.com)

Offering: fruit, plants  
Find us at: Willimantic, Scotland, and West Hartford farmers markets  
Accepting: cash, venmo, cash app, zelle, paypal



## Grabber Cattle

Austin and Aubrey Grabber  
39 Lovers Lane  
Windham, CT 06280  
860-617-3245  
facebook: Grabber Cattle  
[hick.hamp@yahoo.com](mailto:hick.hamp@yahoo.com)

Offering: USDA inspected retail beef, pork and lamb by the cut; wholesale beef and pork; spring flowers and mums  
Find us at: curbside preorder pick up  
Accepting: cash, check



## Raspberry Knoll Farm

Mary & Pete Concklin  
163 North Windham Road  
North Windham, CT 06256  
860-786-7486  
[raspberryknoll.com](http://raspberryknoll.com)  
[info@raspberryknoll.com](mailto:info@raspberryknoll.com)

Offering: strawberries, raspberries, blackberries, blueberries, cut flowers, pick your own  
Open Hours: visit our website for latest hours  
Find us at: our farmstand  
Accepting: cash



## Willimantic Food Co-op

91 Valley Street  
Willimantic, CT 06226  
860-456-3611

[willimanticfood.coop](http://willimanticfood.coop)

Offering: vegetables, fruit, meat, poultry, eggs, dairy, value added products, local & organic products  
Open Hours: Mon-Sun 8am-8pm  
Find us at: our store  
Accepting: credit/debit, cash, check, SNAP/EBT



# WOODSTOCK

---

## Echo Farm

Robert Chang and Bruce Zubee  
1051 Route 169  
Woodstock, CT 06281

860-481-3726  
[echofarmstore.com](http://echofarmstore.com)  
[facebook.com/echofarmWoodstock](https://facebook.com/echofarmWoodstock)  
[robert@echofarmct.com](mailto:robert@echofarmct.com)

Offering: vegetables, flowers, herbs, eggs, local honey, local maple syrup, locally made crafts and gift items  
Open Hours: Thursday thru Sunday 10am-5pm year 'round  
Accepting: credit/debit, cash, check



## Fairholm Farm

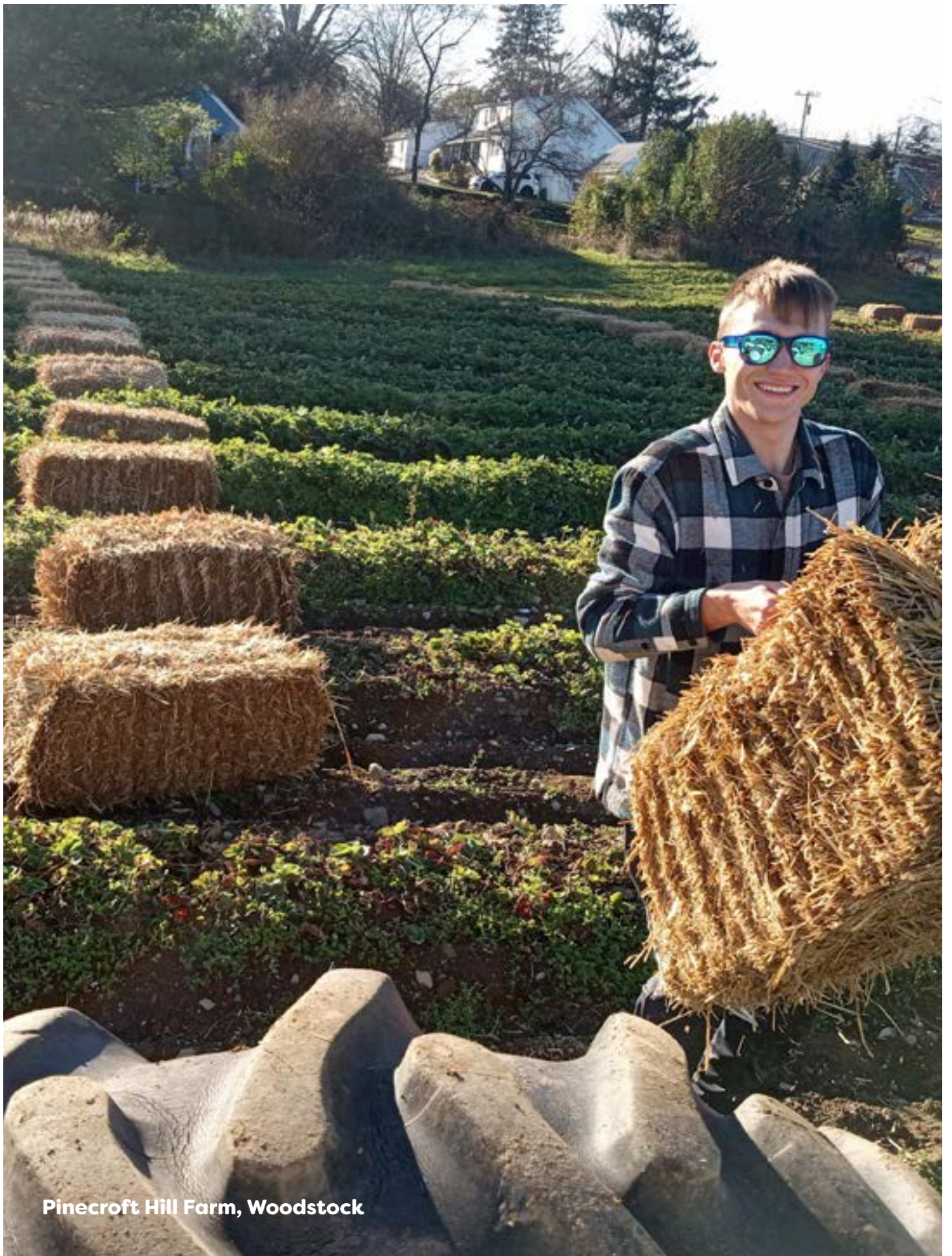
Jon & Erica Hermonot, Todd & Diane Morin  
72 Chandler School Road  
Woodstock, CT 06281

860-923-2624  
[fairholmfarm.com](http://fairholmfarm.com)  
[info@fairholmfarm.com](mailto:info@fairholmfarm.com)

Offering: beef, pork, poultry, eggs, value added products, meat CSA, aged compost, kids farm camp, farm tours  
Open Hours: Mon-Fri 12-6pm, Sat 10am-4pm  
Find us at: our farm store or order online  
Accepting: credit/debit, cash, check







**Pinecroft Hill Farm, Woodstock**



## Farm To Table Market

Matt and Chrissy Peckham  
324 Woodstock Road  
Woodstock, CT 06281

860-614-5096

[elmfarm.net](http://elmfarm.net)

[facebook.com/farmtotablemarketct](https://facebook.com/farmtotablemarketct)

[farmtotablemarket@gmail.com](mailto:farmtotablemarket@gmail.com)

Offering: USDA processed beef, pork, and glass bottled milk, poultry, eggs, dairy, ice cream, curbside pickup  
Open Hours: 10am-8pm until Columbus Day; 10am-6:30pm the rest of the year

Find us at: our farm store or order online for delivery or pickup, at Big Y Danielson, and Willimantic Food Coop

Accepting: credit/debit, cash, check



## French Boys Sugarhouse

George French  
177 Stone Bridge Road  
Woodstock, CT 06281

860-928-6333

[wdstckchristine@aol.com](mailto:wdstckchristine@aol.com)

Offering: pure maple syrup

Open Hours: call ahead

Find us at: our sugarhouse

Accepting: cash, check



## Norman's Sugarhouse

Richard and Avis Norman  
387 County Road  
Woodstock, CT 06281

860-974-1235

[facebook.com/NormansSugarHouse](https://facebook.com/NormansSugarHouse)

[r.norman@snet.net](mailto:r.norman@snet.net)

Offering: maple syrup and honey

Open Hours: call ahead to purchase

Find us at: our sugarhouse

Accepting: cash, check



## Paul's Bees at Sprucedale Gardens

Paul Larson  
20 E Quasset Road  
Woodstock, CT 06281

860-974-0045

[sprucedalegardens.com](http://sprucedalegardens.com)

[info@sprucedalegardens.com](mailto:info@sprucedalegardens.com)

Offering: honey, vegetable plants, herbs, fruiting plants and trees, flowers, and garden center

Open Hours: April - Dec; Tues-Sat 9am-5pm, Jan. - March: Call ahead 860-617-4227

Find us at: Sprucedale Gardens Nursery

Accepting: credit/debit, cash, check, apple pay



## Pinecroft Hill Farm

Dana Chapman  
178 Route 171  
Woodstock CT 08281

860-576-1275

[pinecrofthillfarm.org](http://pinecrofthillfarm.org)

[facebook.com/pinecrofthillfarm](https://facebook.com/pinecrofthillfarm)

[pinecroft2022@gmail.com](mailto:pinecroft2022@gmail.com)

Offering: vegetables, sweet corn, pick your own strawberries, flowers, and pasture raised Black Angus beef

Open Hours: May: self-serve hanging baskets, June, 9am - 1pm for strawberries, July-October, 9 am to 6 pm weekdays, 9am to 5pm weekends

Find us at: our farmstand

Accepting: cash



## Farm Product Key



Vegetables



Poultry



Herbs



Community Supported Agriculture



Farm to School



Fruit



Eggs



Flowers



Pick Your Own



Accepts SNAP



Meat



Dairy



Value Added Products



USDA Certified Organic

## Westview Farm

The Hebert/Mordasky Family  
209 Prospect Street  
Woodstock, CT 06281

860-928-7491

[westviewfarmct.com](http://westviewfarmct.com)

[instagram.com/westview.farm.ct](https://www.instagram.com/westview.farm.ct)

[westview.farm@outlook.com](mailto:westview.farm@outlook.com)

*Offering:* grass fed and grass finished beef, vegetables, berries, eggs, cut flowers, CSA, pick-your-own sunflowers, and tallow skincare products

*Open Hours:* Thur-Sun 10am-6pm or anytime by appointment

*Find us at:* our farmstand, online store, and farmers markets in Sturbridge, MA and Durham, CT

*Accepting:* credit/debit, cash, check



## Woodstock Creamery at Valleyside Farm

The Young family  
210 Child Hill Road  
Woodstock, CT 06281

860-630-5139

[woodstockcreamery.com](http://woodstockcreamery.com)

[facebook.com/WoodstockCreameryatValleysideFarm](https://www.facebook.com/WoodstockCreameryatValleysideFarm)

[valleysidefarm@gmail.com](mailto:valleysidefarm@gmail.com)

*Offering:* meat, poultry, eggs, dairy, value added products, maple syrup, honey, beef CSA

*Open Hours:* everyday 9am-5pm

*Find us at:* at our farm store, find our products at many local farms, and delivery by the Modern Milkman

*Accepting:* credit/debit, cash, check, apple pay



## Woodstock Farms

Rick and Amy Vinal  
586 Senexet Road  
Woodstock, CT 06281

860-428-8792

[facebook.com/woodstockfarms](https://www.facebook.com/woodstockfarms)

[wdstckfrm@charter.net](mailto:wdstckfrm@charter.net)

*Offering:* vegetables, fruit, flowers, garden center, CSA

*Open Hours:* 9am-5pm Mon-Sat

*Find us at:* Putnam, Killingly, Brooklyn, and Plainfield farmers markets, Hope Street farmers market in Providence

*Accepting:* credit/debit, cash, check, venmo



## Woodstock Orchards

Douglas, Donna and Eric Young  
494 Route 169  
Woodstock, CT 06281

860-928-2225

[woodstockorchardsllc.com](http://woodstockorchardsllc.com)

[facebook: Woodstock Orchards LLC](https://www.facebook.com/WoodstockOrchardsLLC)

[woodstockorchardsllc@gmail.com](mailto:woodstockorchardsllc@gmail.com)

*Offering:* vegetables, fruit, value added products, honey, maple syrup, cider, pick your own, baked goods using farm produce

*Open Hours:* everyday 9am-6pm

*Find us at:* our farmstand and/or bakery barn

*Accepting:* credit/debit, cash, check





# FARM TO FOOD ASSISTANCE PROGRAMS

We know that if you're on a tight budget it can be hard to get the delicious fruits, veggies, dairy, and meats that our farms produce for the community. There are a couple of programs in our region that are specifically looking to work with folks to help them access farm fresh food. If you struggle to afford your groceries, these programs below are for you!

## Windham

### Community Fridge at Whitewater Park

A public space where ANYONE may donate or take food for personal use. During the season, volunteers put gleaned food from farms in the fridge! Learn more at [windhamfood.org/community-fridge](http://windhamfood.org/community-fridge)

### Windham Community Food Networks Community Table / Mesa Comunitaria

A pantry service that delivers weekly bags of food to over 40 families in need. They are filled with locally sourced food, gleaned from local farmers, gardeners and pantries and supplemented with additional groceries purchased through community efforts. The bags are packed & delivered by recipients and community members who are compensated for their time.

Learn more and apply at [windhamfood.org/mesa-comunitaria-community-table](http://windhamfood.org/mesa-comunitaria-community-table)

## Mansfield

**Mansfield Farms to Families Program** is designed to help connect local farms with residents from Mansfield and surrounding towns. The goal is to increase access to local, fresh foods from area farms to food insecure households. This is accomplished through CSA shares and sourced monthly food boxes. Visit the Town of Mansfield website to fill out an application.

**Sponsored CSA Shares:** approved households will receive a partially sponsored share with the remaining balance paid by the participant. (e.g. CSA share cost \$500 - \$300 MFFP sponsored share = \$200 paid by the participant)

**Monthly Food Distributions:** locally sourced, fresh produce and food products from area farms coordinated during May through October that consist of a variety of produce, milk and eggs.

Learn more and apply at [mansfieldct.gov/1896/Food-Programs](http://mansfieldct.gov/1896/Food-Programs)

### Mansfield Farms to Families Program



# FUN ON THE FARM FOR KIDS

## BROOKLYN

### Creamery Brook Bison

[creamerybrookbison.net](http://creamerybrookbison.net)

#### Bison and Pumpkin Tours

We hold events throughout the year where you can see bison in fields up close and learn more about these majestic creatures.

### Little Dipper Farm

[littledipperfarm.org/events](http://littledipperfarm.org/events)

Events and activities held each month on the farm that involve the arts, nature, and farm educational activities around growing, harvesting and composting - all kid and family centered!

## KILLINGLY

### DeFazio Orchard and Greenhouses

[Facebook.com/DeFazioOrchardandGreenhouses](https://Facebook.com/DeFazioOrchardandGreenhouses)

#### Annual Corn Maze

Our Corn Maze happens every fall and is open for exploring during business hours.

## LEBANON

### Bees N' Berries Farm

[form.jotform.com/221157403678154](http://form.jotform.com/221157403678154)

#### Kids Classes

We have farm related classes for both preschool and school age populations, and private group classes by request. Honeybees and beekeeping is a favorite for all ages. Follow us on facebook and join our email list for the most up to date happenings.

## POMFRET

### Lapsley Orchard

[lapsleyorchard.com/menu.html](http://lapsleyorchard.com/menu.html)

#### Wagon Rides

We have wagon rides through the orchard every Sunday in September and October 12pm-4pm.

## SCOTLAND

### Soul Leaf Farm

[into-the-earth.square.site/our-programs](http://into-the-earth.square.site/our-programs)

#### Into The Earth Children's Programing

This is a unique venue where children and families can develop independence while enjoying the outdoors. We focus on outdoor exploration, survival skills, regenerative agriculture, wildlife, and self-sustainability. In creating an environment where child-led learning can flourish, we hope that children of all ages will explore the world around them and develop life skills like teamwork, self-awareness and esteem for themselves and others. For more info contact [IntotheearthSLF@gmail.com](mailto:IntotheearthSLF@gmail.com)

## STERLING

### Country Critters Farm

[country-critters-farm.com](http://country-critters-farm.com)

#### Kids Activities and Farm Tours

Offering kids activity days on the farm that feature hands-on learning about soil, fur, and fiber! Visit our website for info. We also offer personalized tours that cater to your interests. These one-on-one tours are a great way to immerse yourself in the everyday life here at Country Critters Farm.

## THOMPSON

### Fort Hill Farms

[forthillfarms.com](http://forthillfarms.com)

#### Late Summer/Early Fall Corn Maze

Explore the 7-acre corn maze that has a new theme each year! Walk through the educational corn maze as you learn about the year's theme. It's a challenging maze, but not frustrating! We also offer select nights where you can enjoy the maze under the stars and moon with our FLASHLIGHT NIGHTS

## WOODSTOCK

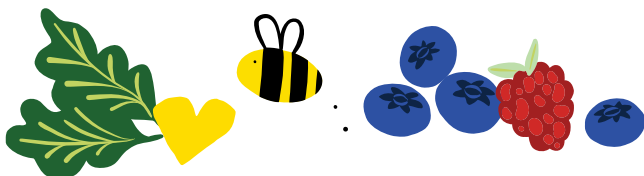
### Fairholm Farm

[fairholmfarm.com](http://fairholmfarm.com)

#### Kids Camp and Farm Tours

Kids will gain an understanding of where and how their food is produced and learn all about animals, land and cooperative teamwork on a modern day farm. 4 fun filled, activity packed weeks to choose from for ages 6 to 12!

Join us for a detailed, guided 1 hour tour of our farm by request! Learn about our modern dairy operation, our pork program, new poultry program, and what sustainability means to us. We're sure you will leave with a new perspective on what it takes to run a farm in the 21st century.



# NORTHEAST CONNECTICUT FARMERS MARKETS

## SUNDAY

### Ashford

May 11-Nov 23  
Sundays 10am-1pm  
25 Tremko Lane, Ashford  
[facebook.com/ashfordfarmersmarketct](https://facebook.com/ashfordfarmersmarketct)

### Coventry

June 1-Oct 26  
Sundays 10am-1pm  
2299 South Steet, Coventry  
[coventryfarmersmarket.org](https://coventryfarmersmarket.org)

### Tolland

May 4-Oct 12  
Sundays 10am-1pm  
Tolland Green, Tolland  
[tollandgreenmarket.com](https://tollandgreenmarket.com)

### Voluntown

July 13-Oct 5  
Sundays 10am-1pm  
195 Main St, Voluntown  
[facebook.com/VoluntownFarmersMarket](https://facebook.com/VoluntownFarmersMarket)

## TUESDAY

### Canterbury

June 17-Sept 23  
Tuesdays 4-6pm  
1 Municipal Drive, Canterbury  
[facebook: Canterbury Farmers Market](https://facebook.com/CanterburyFarmersMarket)

### Plainfield

Starting June 17  
Tuesdays 4-6pm  
651 Norwich Road, Plainfield  
[nectfarmersmarket.org](https://nectfarmersmarket.org)

## WEDNESDAY

### Brooklyn

Starting June 18  
Wednesdays 4-6pm  
564 Providence Road, Brooklyn  
[nectfarmersmarket.org](https://nectfarmersmarket.org)

### Downtown Norwich

July-Oct  
Wednesdays 9am-1pm  
Howard T Brown Park, 100 Chelsea Ave, Norwich  
[facebook.com/Norwichfarm](https://facebook.com/Norwichfarm)

### Scotland

June 4-Oct 15  
Wednesdays 2:30-5:30pm  
39 Devotion Road, Scotland  
[facebook.com/ScotlandCT](https://facebook.com/ScotlandCT)

## THURSDAY

### Lisbon

June 26-Sept 25  
Thursdays 3:30-6:30pm  
12 South Burnham Highway, Lisbon  
[facebook.com/LisbonFarmersMarket](https://facebook.com/LisbonFarmersMarket)

### Putnam

July 10-Aug 28  
Thursdays 3:30-5:30pm  
18 Kennedy Drive, Putnam  
[nectfarmersmarket.org](https://nectfarmersmarket.org)

## SATURDAY

### Killingly

Starting May 3  
Saturdays 9am-12pm  
25 Westcott Road, Danielson  
[nectfarmersmarket.org](https://nectfarmersmarket.org)

### Lebanon

June 7-Oct 11  
Saturdays 9am-12pm  
862 Trumbull Highway, Lebanon  
[facebook.com/LebanonCTFarmersMarket](https://facebook.com/LebanonCTFarmersMarket)

### Mansfield/Storrs

May 3-Nov 22  
Saturdays 3-5pm  
4 S Eagleville Road, Storrs  
[storrsfarmersmarket.org](https://storrsfarmersmarket.org)

### Tolland

May 3-Nov 22  
Saturdays 10am-12pm  
1032 Tolland Stage Road, Tolland  
[facebook: Tolland Farmers Market](https://facebook.com/TollandFarmersMarket)

### Putnam - Assawaga Farm

May 17- Nov 22  
Saturdays 9am-12pm  
626 Providence Pike, Putnam  
[assawagafarm.com](https://assawagafarm.com)

### Putnam

June 7-Oct 25  
Saturdays 10am-1pm  
18 Kennedy Drive, Putnam  
[facebook: Putnam Saturday Farmers Market](https://facebook.com/PutnamSaturdayFarmersMarket)

### Windham/Willimantic

May 10-Oct 25  
Saturdays 8am-12pm  
28 Bridge Street, Willimantic  
[willimanticfarmersmarket.org](https://willimanticfarmersmarket.org)





# PICK YOUR OWN FARMS

## ASHFORD

### **Crookes Orchard**

apples, peaches, blueberries

[crookesorchard.com](http://crookesorchard.com)

317 Bebbington Road

## EASTFORD

### **Buell's Orchard**

strawberries, blueberries, peaches, raspberries,  
apples, cherries, pumpkins

[buellosorchard.com](http://buellosorchard.com)

108 Crystal Pond Road

## FRANKLIN

### **Pete's Produce Farm**

strawberries, blueberries

[facebook.com/petes.produce.farm](https://facebook.com/petes.produce.farm)

47 Kahn Road

## KILLINGLY

### **Blueberry Hill Organic Farm**

strawberries, raspberries, blueberries, pumpkins

[blueberryhillorganicfarm.com](http://blueberryhillorganicfarm.com)

314 Margaret Henry Road

### **DeFazio Orchard and Greenhouse**

apples, pears

[facebook.com/DeFazioOrchardandGreenhouses](https://facebook.com/DeFazioOrchardandGreenhouses)

1393 North Road

## LEBANON

### **Bees N' Berries Farm**

black raspberries, blueberries, raspberries

[facebook.com/beesnberriesfarm](https://facebook.com/beesnberriesfarm)

240 Levita Road

## LISBON

### **Grant's Berry Patch**

strawberries, blueberries, raspberries, pumpkins

[grantsberrypatch.net](http://grantsberrypatch.net)

188 Mell Road

## PLAINFIELD

### **18th Century Purity Farm**

apples

[facebook: 18th Century Purity Farms](https://facebook.com/18thCenturyPurityFarms)

Hall Homestead: 154-156 Plainfield Pike

### **Rachel's Veggies and Berries**

blueberries

[facebook: Rachel's Veggies and Berries](https://facebook.com/RachelsVeggiesandBerries)

106 Cranska Road

## POMFRET

### **Lapsley Orchard**

flowers, blueberries, apples, pumpkins

[lapsleyorchard.com](http://lapsleyorchard.com)

403 Orchard Hill Road

### **Windsong Farm Blueberries**

blueberries

[facebook: Windsong Farm Blueberries](https://facebook.com/WindsongFarmBlueberries)

54 Tull Lane

## STERLING

### **Berry Sweet Farm**

blueberries, red/black currants, gooseberries

[facebook.com/bzberries](https://facebook.com/bzberries)

218 Calvin French Road

## TOLLAND

### **Little River at Lemek Farms**

blueberries, raspberries

[facebook: Lemek Farms LLC - Larry Berries and much more](https://facebook.com/LemekFarmsLLC)

343 Goose Lane

## WINDHAM

### **Raspberry Knoll Farm**

strawberries, raspberries, blueberries, blackberries, flowers

[raspberrynoll.com](http://raspberrynoll.com)

163 North Windham Road

## WOODSTOCK

### **Pinecroft Hill Farm**

strawberries

[pinecrofthillfarm.org](http://pinecrofthillfarm.org)

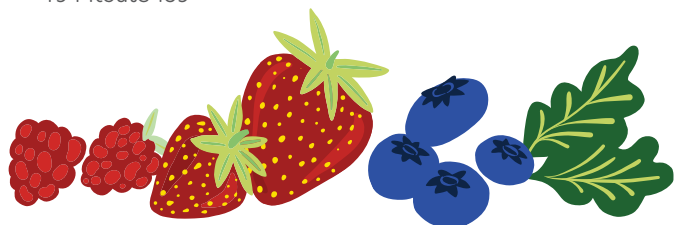
178 Route 171

### **Woodstock Orchards**

blueberries, apples

[woodstockorchardsllc.com](http://woodstockorchardsllc.com)

494 Route 169



# FIND NORTHEAST CONNECTICUT PRODUCTS HERE

## Sweet Peas Fine Foods

Brooklyn  
[sweetpeasfinefoods.com](http://sweetpeasfinefoods.com)

## Adam's Hometown Market

Canterbury  
[adamshometownmarkets.com](http://adamshometownmarkets.com)

## Motta's Bakery

Columbia  
[mottasbakery.com](http://mottasbakery.com)

## Coventry Public Market

Coventry  
[coventrypublicmarket.com](http://coventrypublicmarket.com)

## Countryside Farm Market

Franklin  
[facebook: Countryside Farm Market](https://facebook.com/CountrysideFarmMarket)

## Ted's IGA Market

Hebron  
[tedsiga.com](http://tedsiga.com)

## Heirloom Food Co

Killingly  
[eatheirloomfood.com](http://eatheirloomfood.com)

## Jack's Market on the Green

Lebanon  
[facebook: Jacks Market on the Green](https://facebook.com/JacksMarketontheGreen)

## Big Y

Mansfield, Plainfield, Tolland,  
Danielson, and Norwich  
[bigy.com](http://bigy.com)

## Dog Lane Cafe

Mansfield  
[doglanecafe.com](http://doglanecafe.com)

## Farmer's Cow Calfe

Mansfield  
[thefarmerscowcalfe.com](http://thefarmerscowcalfe.com)

## Fenton River Grill

Mansfield  
[fentonrivergrill.com](http://fentonrivergrill.com)

## GM Thompson and Sons

Mansfield  
[gmthompson.net](http://gmthompson.net)

## Mansfield Supply

Mansfield  
[mansfieldsupply.com](http://mansfieldsupply.com)

## The Farm at Central Village

Plainfield  
[facebook.com/thefarmatcentralvillage](https://facebook.com/thefarmatcentralvillage)

## Grill37

Pomfret  
[grill37.com](http://grill37.com)

## The Vanilla Bean Cafe

Pomfret  
[thevanillabeancafe.com](http://thevanillabeancafe.com)

## Elizabeth's Farm House

Putnam  
[elizabethsfarmhouse.com](http://elizabethsfarmhouse.com)

## Price Chopper

Putnam  
[pricechopper.com](http://pricechopper.com)

## Putnam Supermarket

Putnam  
[facebook.com/Putnamsupermarkrt](https://facebook.com/Putnamsupermarkrt)

## Alamode Specialty Foods Market

Thompson  
[facebook.com/Alamodespecialtyfoodsmarket](https://facebook.com/Alamodespecialtyfoodsmarket)

## The Country Butcher at Spring Meadow Farm

Tolland  
[countrybutcherct.com](http://countrybutcherct.com)

## Amano Taco

Willimantic  
[amanotacoshop.com](http://amanotacoshop.com)

## Mackey's

Willimantic  
[mackeysgrows.com](http://mackeysgrows.com)

## Stone Row Kitchen and Bar

Willimantic  
[stonerowkb.com](http://stonerowkb.com)

## Trigo

Willimantic  
[trigokitchen.com](http://trigokitchen.com)

## Willimantic Brewing Company

Willimantic  
[willimanticbrewingcompany.com](http://willimanticbrewingcompany.com)

## Willimantic Food Coop

Willimantic  
[willimanticfood.coop](http://willimanticfood.coop)

## Bob's Windham IGA

Windham  
[windhamiga.com](http://windhamiga.com)

## Buck's Soft Serve

Woodstock  
[instagram.com/buckssoftserve](https://instagram.com/buckssoftserve)

## Rusty Relic

Woodstock  
[facebook.com/rustyrelicct](https://facebook.com/rustyrelicct)

## FOOD TRUCKS

### Bison Brook Creamery

Brooklyn  
[creamerybrookbison.net](http://creamerybrookbison.net)

### Twin Beaks Fried Chicken

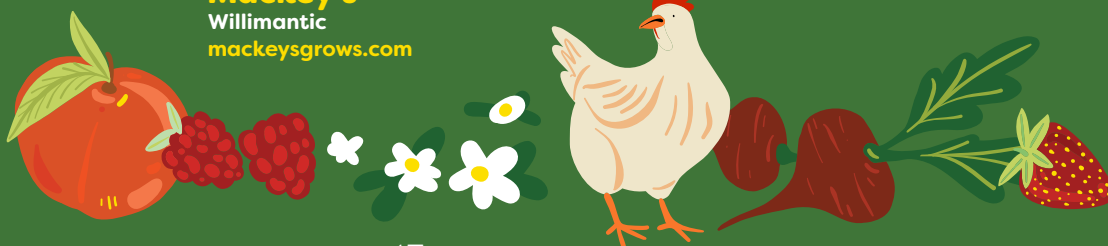
Columbia  
[twinbeaksfriedchicken.com](http://twinbeaksfriedchicken.com)

### Taylor Spring Farm

Union  
[taylorspringfarm.com](http://taylorspringfarm.com)

### Grace Gourmet

Woodstock  
[facebook.com/GraceGourmetCT](https://facebook.com/GraceGourmetCT)



# USING YOUR **FMNP** AND **SNAP** BENEFITS TO GET FRESH, LOCALLY GROWN PRODUCTS

Are you a recipient of Farmers Market Nutrition Program (FMNP) benefits or Supplemental Nutrition Assistance Program (SNAP) and are hoping you can use them to buy local food? You're in luck! There are options all over the region to use your benefits to get fresh local food from Northeast CT farms.

## What are FMNP benefits?

FMNP stands for Farmers Market Nutrition Program and includes both the Women, Infants and Children Farmers Market Nutrition Program (WIC FMNP) and the Senior Farmers Market Nutrition Program (SFMNP). Eligible participants are provided electronic benefit cards or an account to access benefits on a mobile device to purchase fresh, unprocessed Connecticut Grown fruits, vegetables, fresh-cut herbs and eggs (and honey for seniors) at authorized farmers markets and farms. The program expands awareness, use of, and sales at farmers markets. The Connecticut Department of Agriculture collaborates with the Connecticut Department of Public Health, 23 local WIC offices, and approximately 200 senior local coordinating agencies.

## Where can I use my FMNP benefits to find local food from farms?

Many of the farmers markets in the region are authorized redemption locations to accept FMNP benefits. The following farmers markets and farms in the region are authorized by the state as FMNP redemption sites in 2025. To check the list of authorized farmers markets, visit [portal.ct.gov/doag/adarc/adarc/farmers-market-nutrition-program](https://portal.ct.gov/doag/adarc/adarc/farmers-market-nutrition-program).

- Ashford Farmers Market
- Betsy's Stand, Sterling
- Coventry Farmers Market
- Killingly Farmers Market
- Lebanon Farmers Market
- Lisbon Farmers Market
- Downtown Norwich Farmers Market
- Putnam Saturday Farmers Market
- Putnam Thursday Farmers Market
- Riverview Farm, Mansfield
- Scotland Farmers Market
- Tolland Green Farmers Market
- Willimantic Farmers Market
- Woodstock Farms, Woodstock

## What are SNAP benefits?

The federal Supplemental Nutrition Assistance Program (SNAP) provides nutrition benefits to supplement the food budget of families in need so they can purchase healthy food and move towards self-sufficiency. Electronic Benefits Transfer (EBT) is an electronic system that allows a Supplemental Nutrition Assistance Program (SNAP) participant to pay for food using SNAP benefits.

## Where can I use my SNAP benefits to find local food from farms?

There are farms and farmers markets that accept SNAP throughout the region. Grown ConNECTed's online SNAP Retailer Farm & Farmers Market locator allows anyone to locate nearby SNAP-authorized farms and markets: [grownconnected.org/snap](https://grownconnected.org/snap)

- Betsy's Stand, Sterling
- Brooklyn Farmers Market
- B-Z-B Farm, Canterbury
- Downtown Norwich Farmers Market
- KDCrop Farms, Chaplin
- Killingly Farmers Market
- Lebanon Farmers Market
- Lucky Clover Farm, Tolland
- Lynch Hill Farm, Lebanon
- Our Kids Farm, Canterbury
- Plainfield Farmers Market
- Putnam Saturday Farmers Market
- Radical Roots Farm, Canterbury
- Russo's Roots, Canterbury
- Tolland Green Farmers Market
- Willimantic Farmers Market
- Willimantic Food Coop
- Voluntown Farmers Market

## What does it mean to "double" my SNAP and how do I do it?

The Willimantic Farmers Market doubles SNAP benefits for fresh fruits and vegetables for up to \$10 every week. You'll receive two sets of wooden tokens: one that's black and can be used for any food item (produce, bread, meat, eggs, syrup, etc.) and another that's green and can only be used to purchase fresh fruits and vegetables. Each token is worth \$1. For example, if someone uses their EBT card at the Market Information Tent and takes out \$10 of their SNAP benefits, they'll receive 10 black tokens and 10 green tokens to spend at the market. If someone takes out \$20, they'll receive 20 black tokens and 10 green tokens.

### Need food assistance or want to learn more?

Visit the Connecticut SNAP website: [portal.ct.gov/dss/snap/supplemental-nutrition-assistance-program---snap](https://portal.ct.gov/dss/snap/supplemental-nutrition-assistance-program---snap) And check out page 43 for additional Farm to Food Assistance programs





# COMMUNITY AGRICULTURE FAIRS AND EVENTS

## Brooklyn Fair

Brooklyn

[brooklynfair.org](http://brooklynfair.org)

August 21-24

15 Fairgrounds Road

## Celebrating Ag Day

Brooklyn

[celebratingagriculture.org](http://celebratingagriculture.org)

September 20

Brooklyn Fairgrounds

## Creamery Brook Bison Festival at the Farm

Brooklyn

[facebook.com/CreameryBrookBison](https://facebook.com/CreameryBrookBison)

June 7

19 Purvis Rd

## Little Dipper Farm Summer Vibes Festival

Brooklyn

[littledipperfarm.org](http://littledipperfarm.org)

June 28

499 Wolf Den Road

## Windham County 4-H Fair

Brooklyn

[facebook.com/windhamcountyt4h/events](https://facebook.com/windhamcountyt4h/events)

July 25-27

Brooklyn Fair Grounds, Rt 169

## Buell's Annual Harvest Festival

Eastford

[buelssorchard.com/upcoming-events](http://buelssorchard.com/upcoming-events)

October 11 & 13

108 Crystal Pond Road

## Hebron Harvest Fair

Hebron

[hebronharvestfair.org](http://hebronharvestfair.org)

September 4-7

347 Gilead Street

## Lebanon Country Fair

Lebanon

[lebanoncountryfair.org](http://lebanoncountryfair.org)

July 25-27

122 Mack Road

## Celebrate Mansfield Festival

Mansfield

[downtownstorrsfestival.org](http://downtownstorrsfestival.org)

September 27, 2-8pm

Downtown Storrs

## Lapsley Orchard Fall Festival

Pomfret

[lapsleyorchard.com/menu.html](http://lapsleyorchard.com/menu.html)

October 11-13

403 Orchard Hill Road

## Ekonk Grange Fair

Sterling

[ekonkgrange.org/grangeagfair.asp](http://ekonkgrange.org/grangeagfair.asp)

August 9

723 Ekonk Hill Rd

## Ekonk Hill Turkey Farm Harvest Festival

Sterling

[facebook.com/ekonkhillturkeyfarm](https://facebook.com/ekonkhillturkeyfarm)

October 11-13

## Tolland County 4-H Fair

Vernon

[facebook.com/tollandcounty4hfair](https://facebook.com/tollandcounty4hfair)

August 8-10

24 Hyde Avenue

## Fairholm Farm Open House

Woodstock

[fairholmfarm.com](http://fairholmfarm.com)

June 8

72 Chandler School Rd

## Woodstock Fair

Woodstock

[woodstockfair.com](http://woodstockfair.com)

August 28-September 1

281 Route 169





**ANDOVER**

1. Hurst Farms
2. The Landing Strip Farm
3. Proctor-Hall

**ASHFORD**

4. BOTL Farm
5. Circle G Farm
6. Coruscant Farm
7. Crookes Orchard
8. Dayspring Farm
9. Knowlton Farm
10. Rivers Edge Sugar House
11. Scarletoak Farm
12. West View Farm

**BROOKLYN**

13. Creamery Brook Bison
14. Crossmans' Country Farm
15. Daigle Farm
16. Granpa K Farm
17. Little Dipper Farm
18. MIMBY Farm

**CANTERBURY**

19. B-Z-B Farm
20. Baldwin Brook Farm
21. Eagle Heights Farm
22. Fenner Forest Farm
23. FoxView Farm
24. Our Kids Farm
25. Radical Roots Farm
26. Russo's Roots
27. Swampy Acres

**CHAPLIN**

28. Bats Of Bedlam Farm
29. Buddha's Bees
30. Juniper Hill Farm
31. KDCrop Farms

**COLUMBIA**

32. Cambera Farm
33. Cloverleigh Farm
34. East Willow Farm
35. Field Engineer Farm
36. The GOOD Farm
37. Ramble Creek Farm
38. Wilkinson Farm

**COVENTRY**

39. Creative Living Community of CT
40. Forest Mill Farm
41. Riverview Farm
42. Still River Farm
43. Tardif Poultry Farm
44. Turtle Creek Farm

**EASTFORD**

45. Buell's Orchard
46. Eastford Farm

**FRANKLIN**

47. Hearthstone Hill Farm
48. Kindred Crossings
49. Pete's Produce Farm

**GRISWOLD**

50. Campbell's Farm Stand
51. LakeView Farm Market

**HAMPTON**

52. A & Z Apiaries
53. Bright Acres Farm Sugarhouse
54. Buell's Dragonfly Farm
55. Full Moon Farm
56. Lone Elm Farm
57. Organic Roots Farm at Popover Hill
58. Pebble Brook Maple Farm

**HEBRON**

59. Black Cat White Dog Farm
60. Friendly Spirit Farm
61. Hills Farm
62. Winding Brook Sugarhouse

**KILLINGLY**

63. Blueberry Hill Organic Farm
64. DeFazio Orchard & Greenhouses
65. Palazzi Orchard & Farm
66. Round Hill Ranch

**LEBANON**

67. Apis Verdi Farm
68. Aries Crossing Farm
69. Bees N' Berries Farm
70. Bluebird Hill Farm
71. Colgan Farm
72. Connell Farm LLC
73. Evans Farm
74. Goshen Hill Maples
75. Lathrop Farmstead
76. Le Bon Mouton Farm
78. Ledge Stone Orchard
79. Lynch Hill Farm
80. Maggie's Farm
81. Rare Breed Cheese
82. Sugar Maple Farms
83. Sweet Acre Farm
84. Tobacco Road Farm
85. Village Hill Farm

**LISBON**

86. Cedar Song Apiary
87. Grant's Berry Patch

**MANSFIELD**

88. Birch Stone Farm
89. Cobblestone Farm
90. Fern Mill Farm
91. Forever Farm CT
92. Hickory Hill Farms, LLC
93. Madman Micros
94. Mountain Dairy
95. Shooks Apiaries
96. Shundahai Farm
97. Spring Valley Student Farm
98. Varga Family Farm

**PLAINFIELD**

99. 18th Century Purity Farm
100. Bad Toad Farm
101. Dove Hill Farm
102. Rachel's Veggies & Berries
103. RAKZ Farm
104. Stone Hill Farm

**POMFRET**

105. Easy Acres Gnomestead
106. Lapsley Orchard
107. Red Tail Valley Farm
108. Sunny Patch Farm
109. Unbound Glory Farm
110. We-Lik-It Farm
111. Windsong Farm Blueberries

**PRESTON**

112. CT Wagyu
113. LoPresti Farm
114. Sweet Grass Creamery

**PUTNAM**

115. Assawaga Farm

**SCOTLAND**

116. Barton Farms
117. Soul Leaf Farm

**SPRAGUE**

118. Pond View Farm
119. Stonewall Apiary

**STERLING**

120. Betsy's Stand
121. Berry Sweet Farm
122. Country Critters Farm
123. Ekonk Hill Turkey Farm
124. Granite Apiaries

**THOMPSON**

125. Blackmer Farm
126. The Farmer's Porch at Fort Hill Farms
127. New Boston Beef

**TOLLAND**

128. Collinswood Mushrooms
129. E&J Family Farm
130. Little River at Lemek Farms
131. Lucky Clover Farm
132. Roots on Russell

**UNION**

133. Hidden Blossom Farm
134. Union Bee Company

**WILLINGTON**

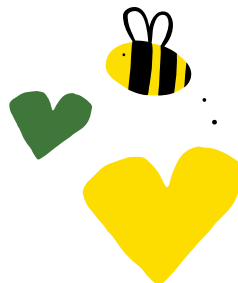
135. Growing Goodness Farm
136. Willow Valley Farm

**WINDHAM**

137. Bliss Plant and Flower Company
138. Grabber Cattle
139. Raspberry Knoll Farm
140. Willimantic Food Co-Op

**WOODSTOCK**

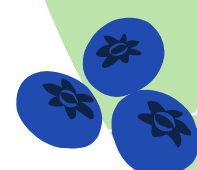
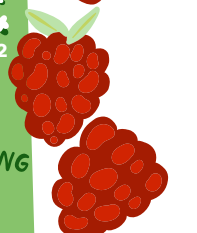
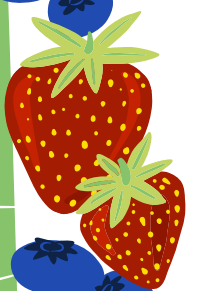
141. Echo Farm
142. Fairholm Farm
143. Farm To Table Market
144. French Boys Sugarhouse
145. Norman's Sugarhouse
146. Paul Bee's at Sprucedale Gardens
147. Pinecroft Hill Farm
148. Westview Farm
149. Woodstock Creamery at Valleyside Farm
150. Woodstock Farms
151. Woodstock Orchards





# GROWN CONNECTED

## FARM MAP



SEE INSIDE BACK COVER FOR FARM NAMES

